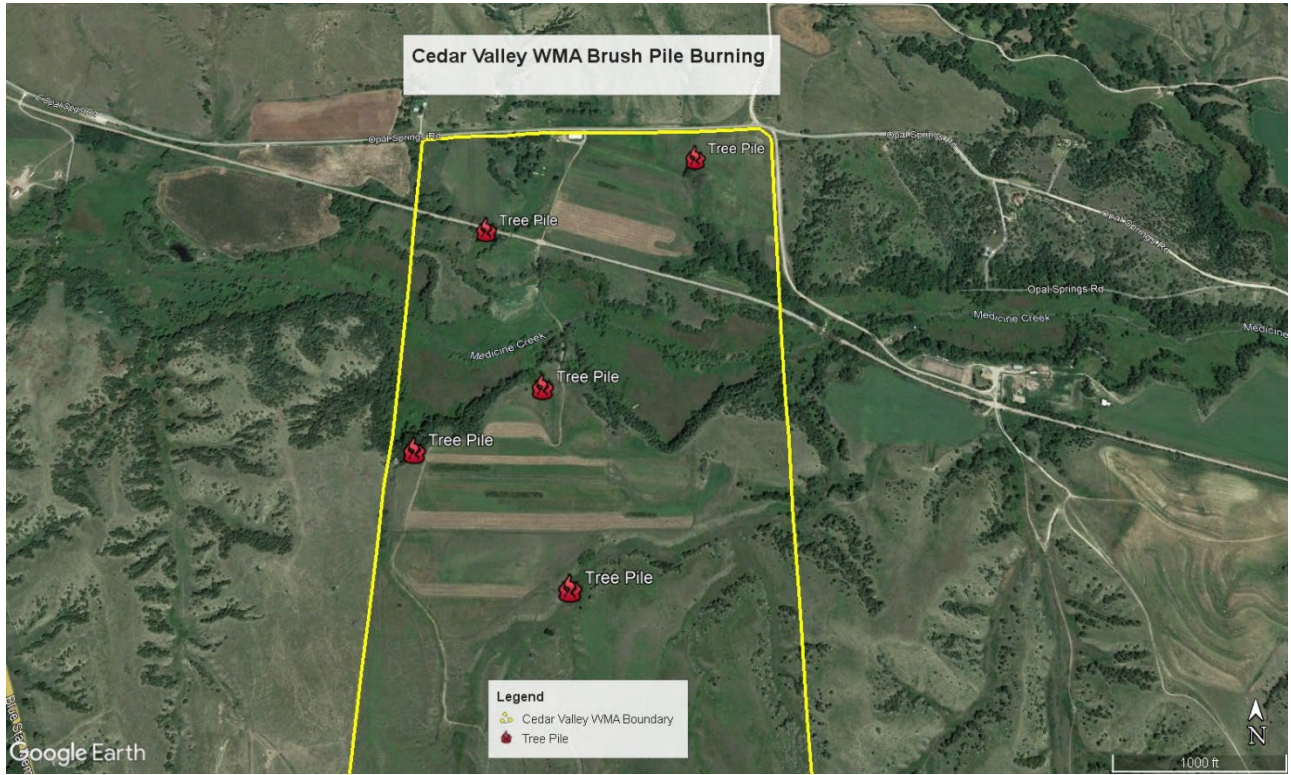


Item 1 – Brush Pile Burning

Cedar Valley WMA Map:

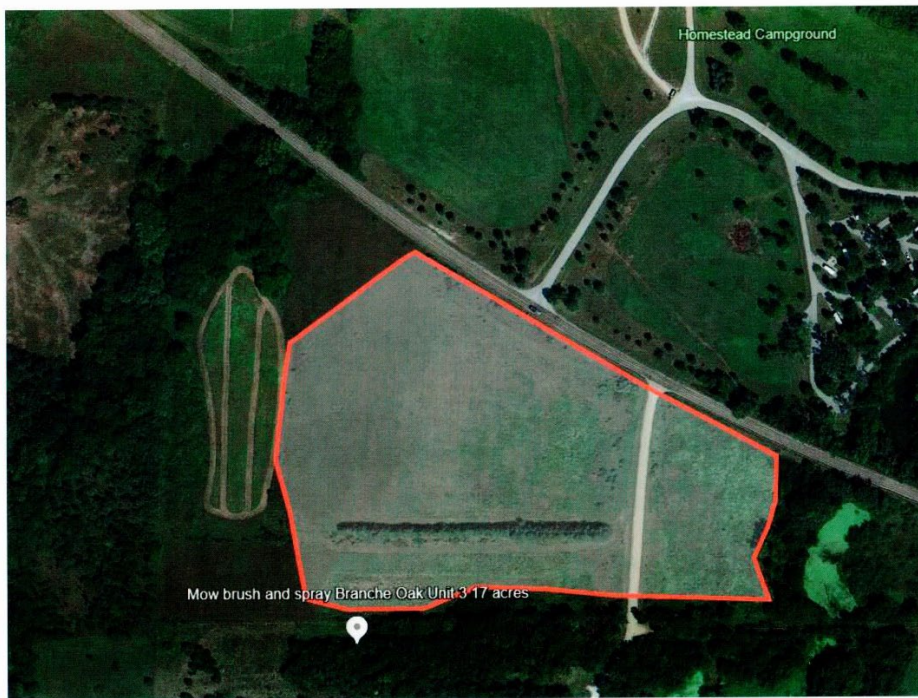


Chester Island WMA Map:



Item 2 – Brush Clearing/Spraying

Branched Oak Map:



Yankee Hill Map:



Lores Branch WMA Map:



Margrave WMA Map:



Peru Bottoms WMA Map:

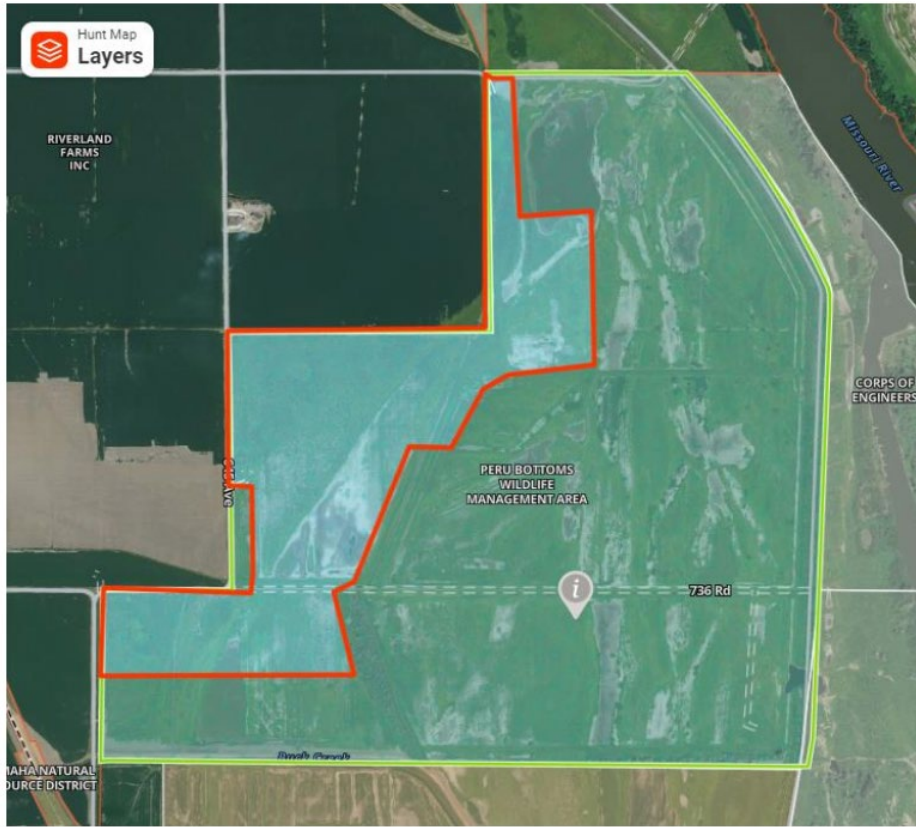
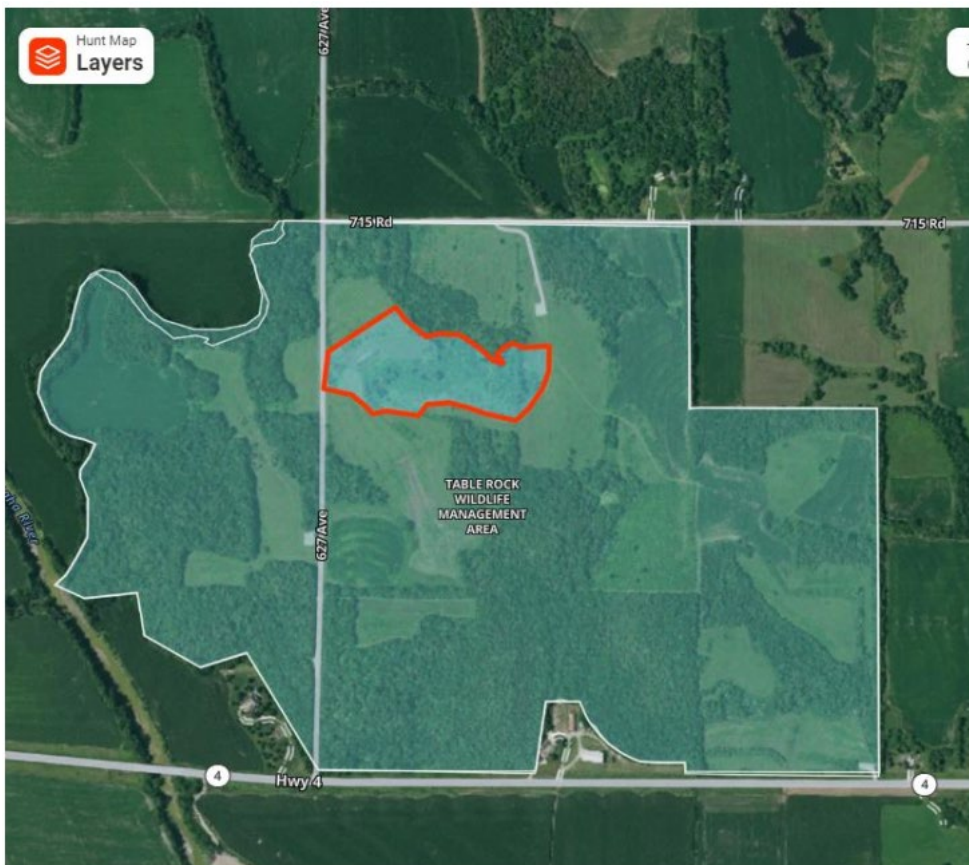
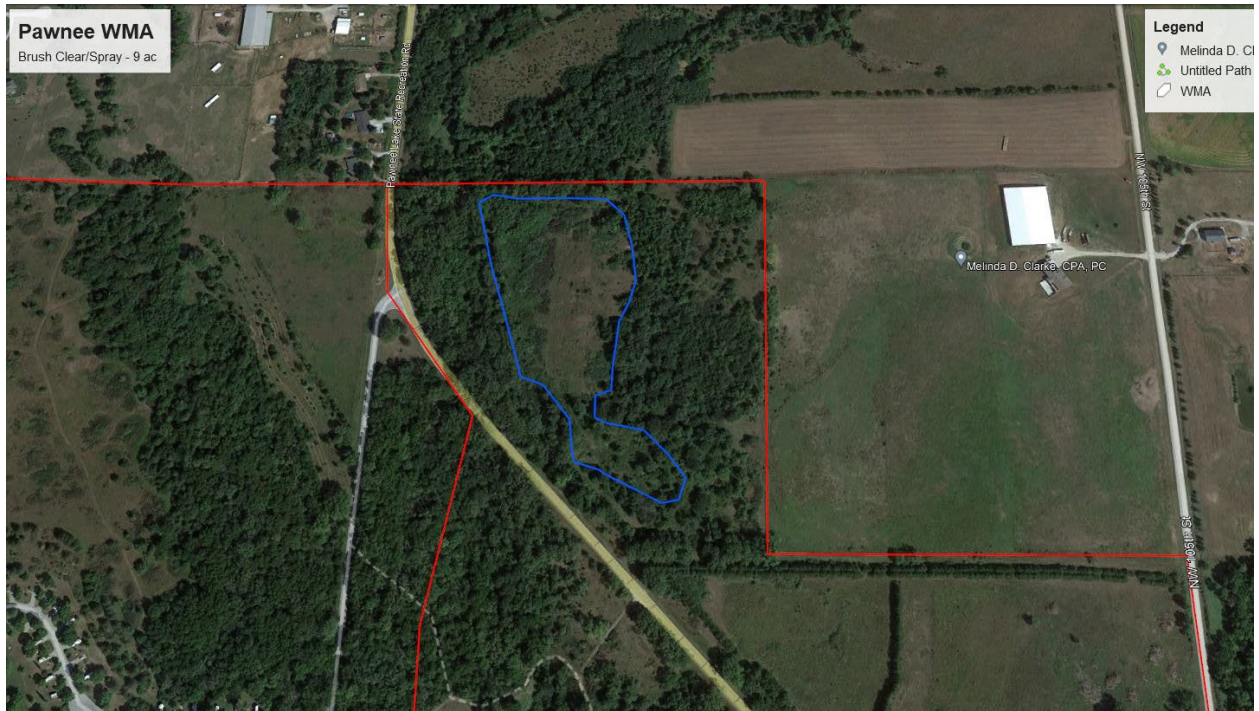


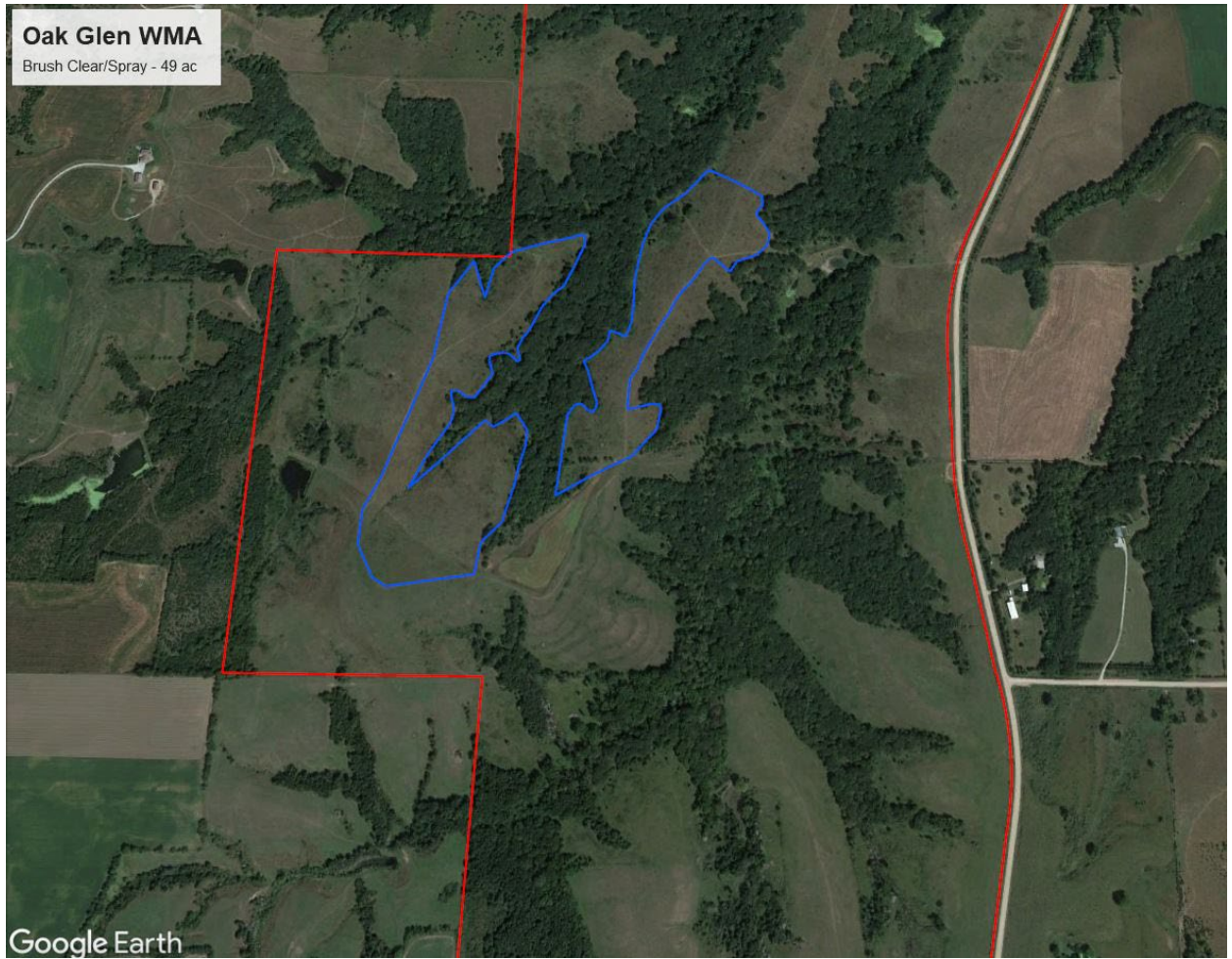
Table Rock WMA Map



Pawnee WMA Map:

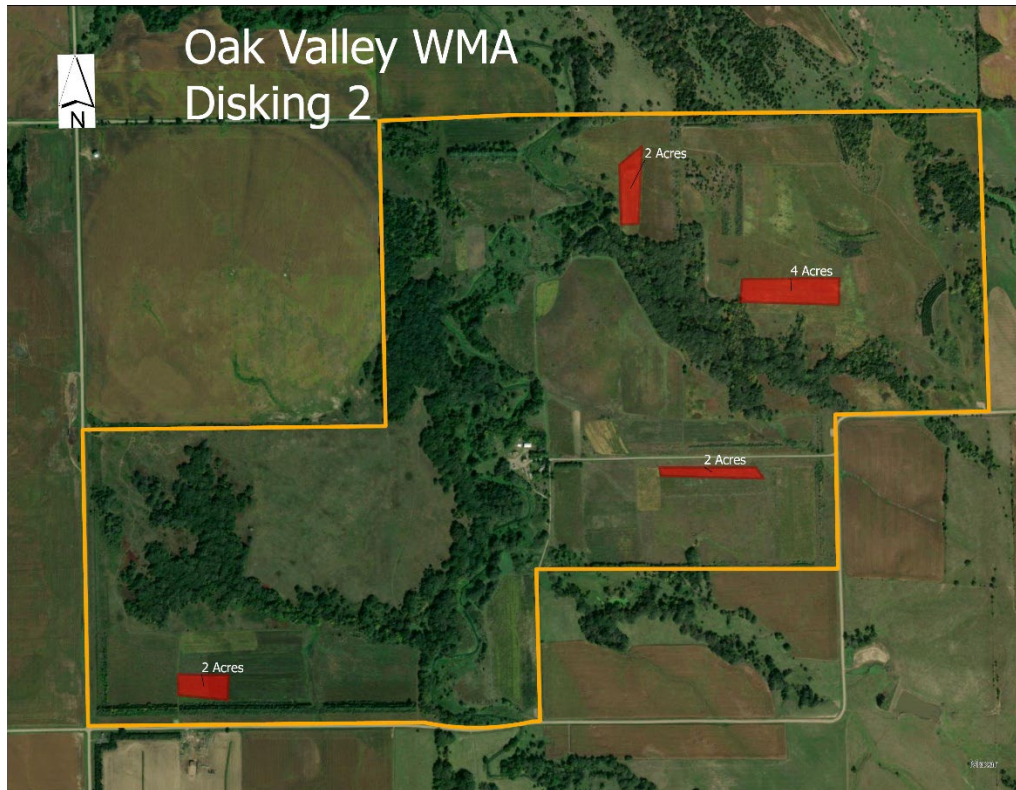


Oak Glen WMA Map:

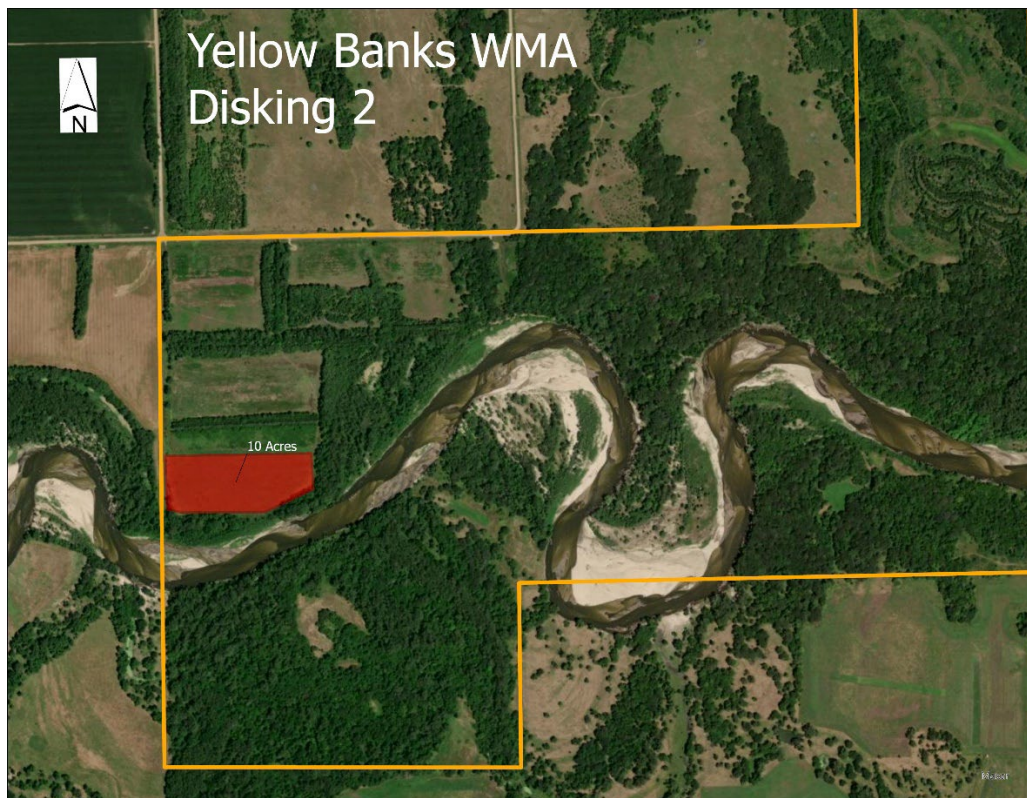


Item 3 – Disking 2

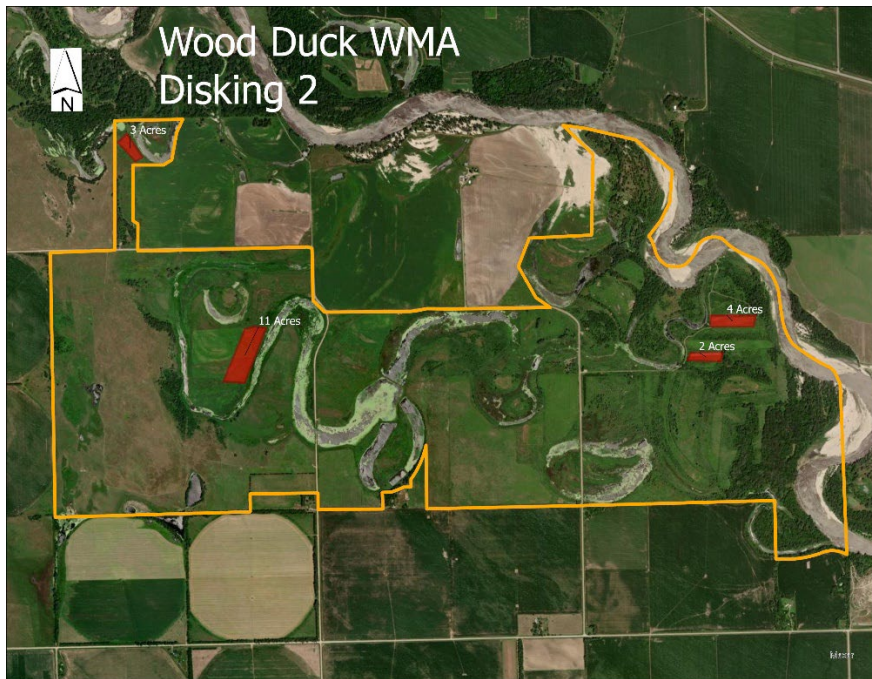
Oak Valley WMA Map:



Yellow Banks WMA Map:



Wood Duck WMA Map:

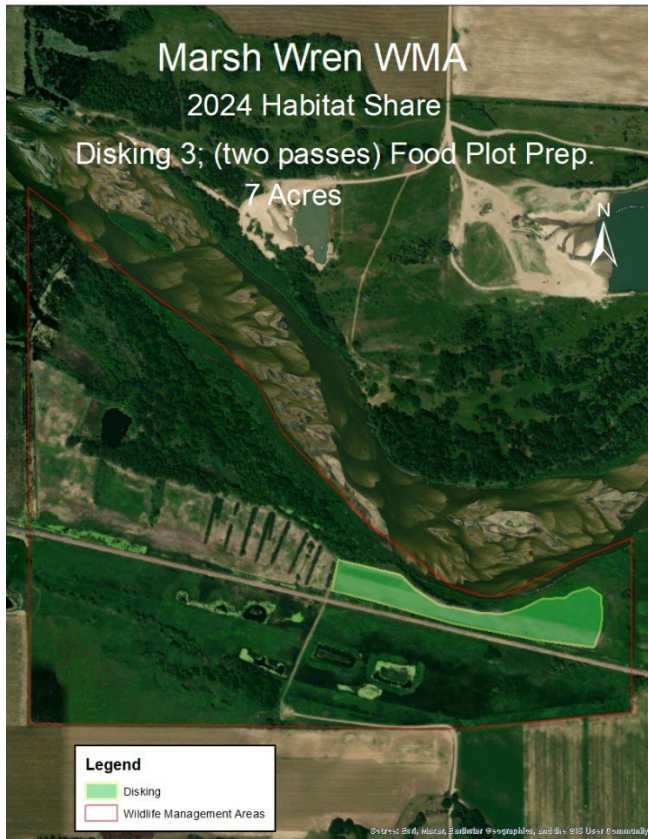


Item 4 – Disking 3

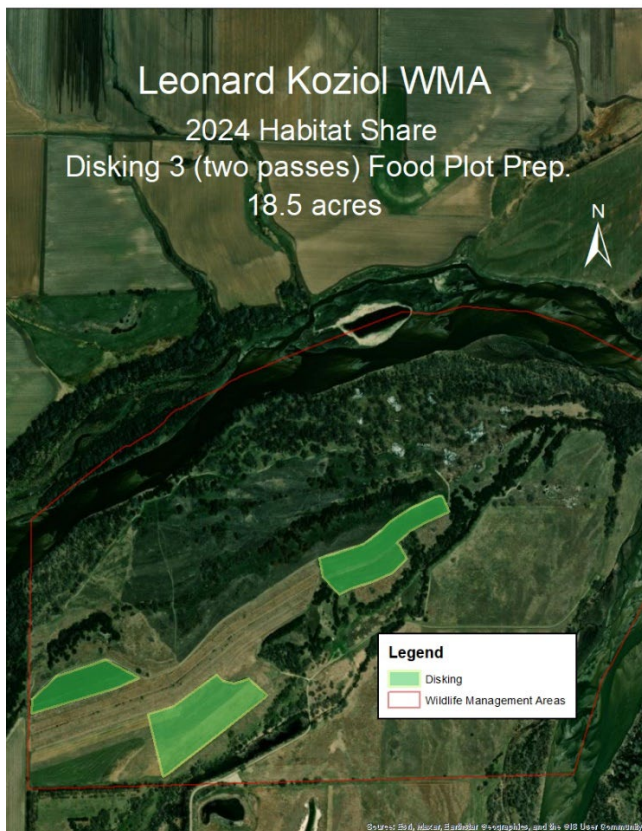
Sherman Reservoir Map:



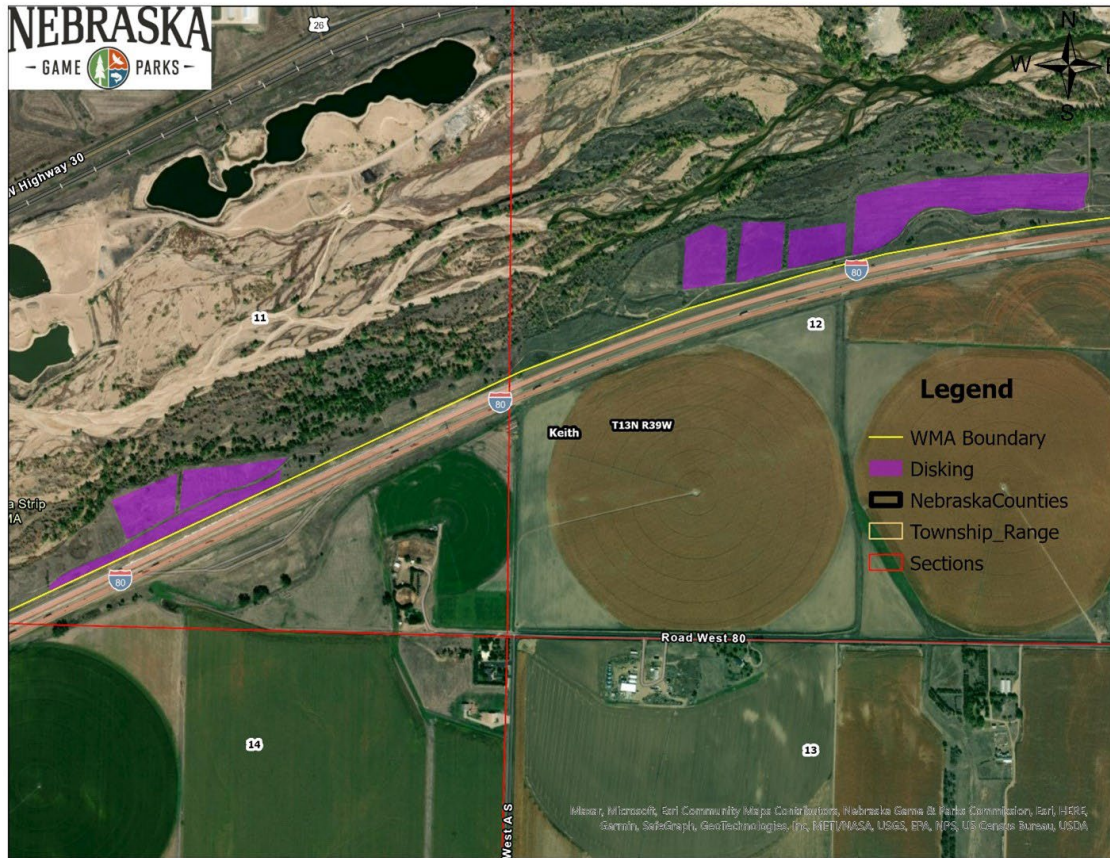
Marsh Wren WMA Map:



Leonard A. Koziol WMA Map:



Ogallala Strip Map:



Item 5 – Spraying 1

Myrtle Hall WMA Map:



Davis Creek WMA Map:



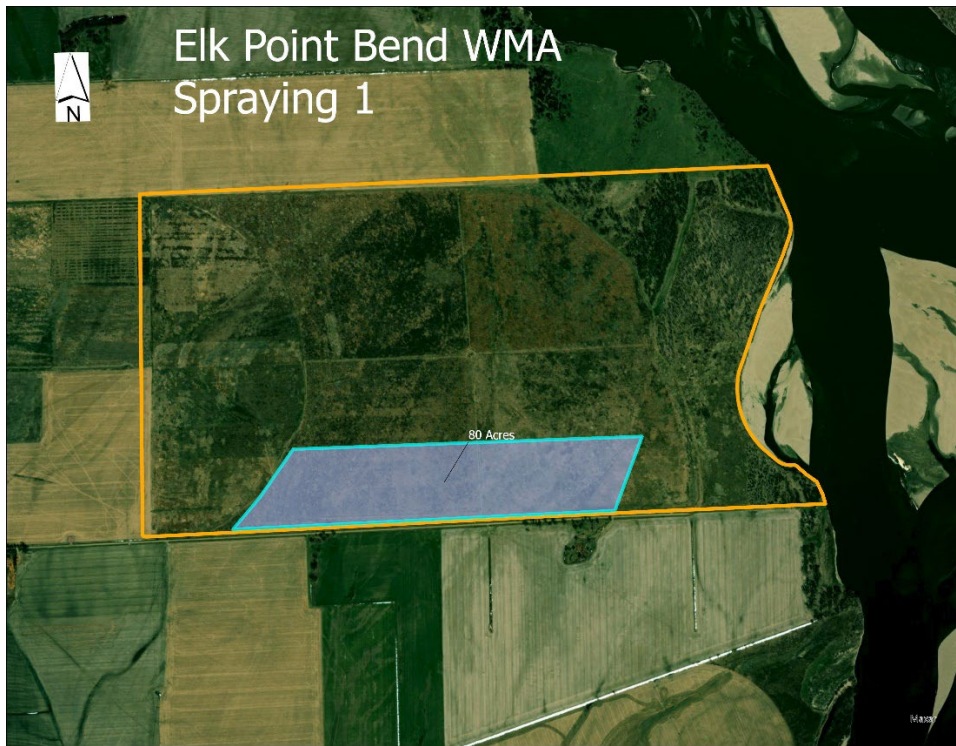
Thomson Barnes WMA Map:

Thomson Barnes WMA Spraying 1



- | | |
|--------------------------------------|--|
| Habitat Management Activities | Monitoring |
| Management Activity Type | Planting (Food Plots / Crops / Grasslands) |
| Prescribed Burning | Spraying |
| Disking | Tilling |
| Prescribed Grazing | Tree Clearing / Thinning |
| Prescribed Haying | <all other values> |
| | Wildlife Management Areas |

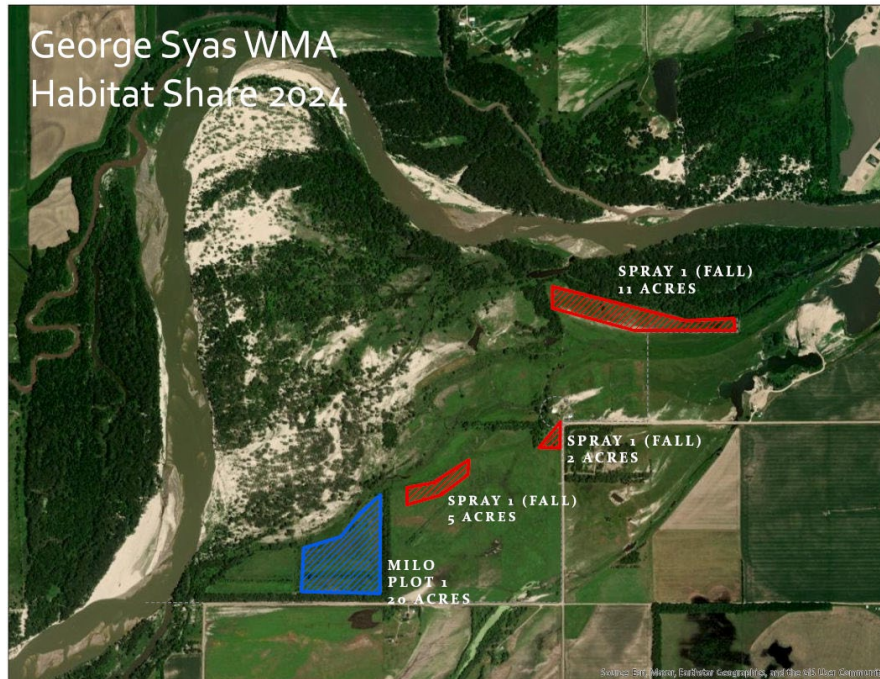
Elk Point Bend WMA Map:



Wilkinson WMA Map:



Goerge Syas WMA Map:



Item 6 – Spraying 2

Swan Creek WMA Map:

Dry Sandy WMA Map:

Item 7 – Spraying 4

Yellow Banks WMA Map:

Yellow Banks WMA
Spraying 4



Powder Horn WMA Map:



Red Fox WMA Map:

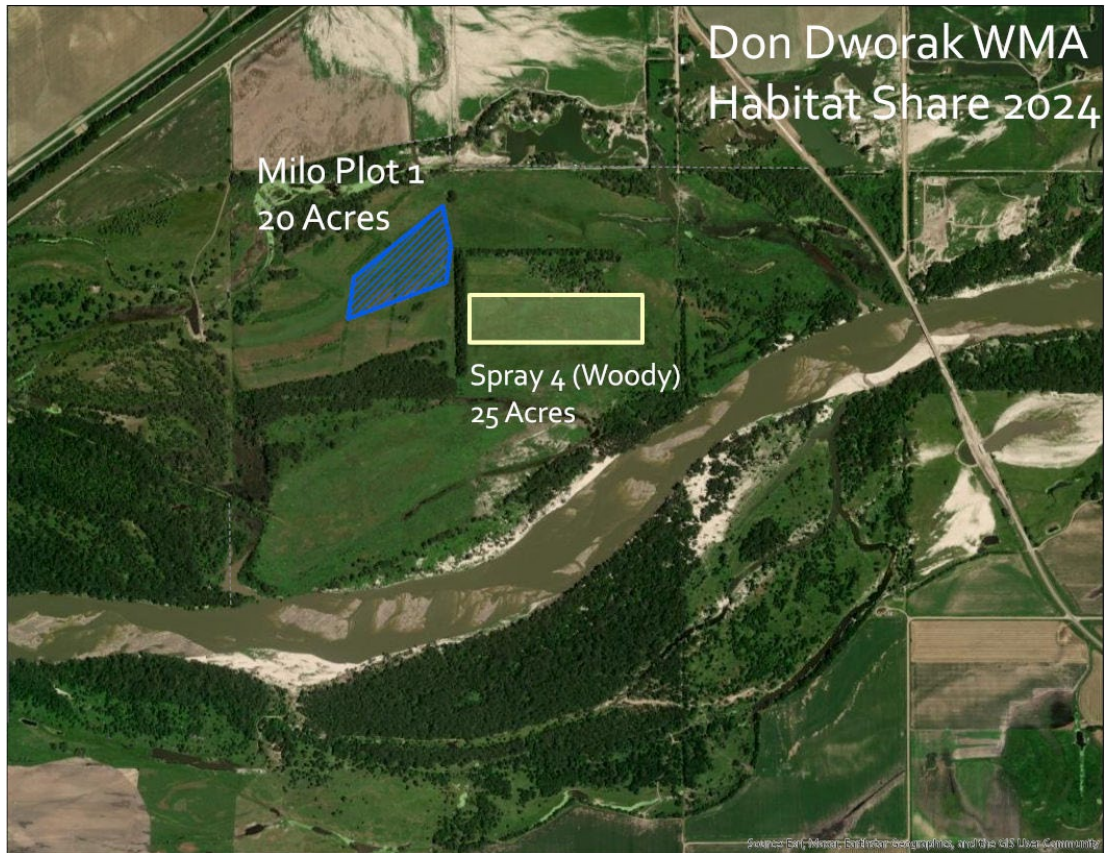
Red Fox WMA Spraying



Wilkinson WMA Map:



Don Dworak WMA Map:



Item 8- Sericea Lespedeza Spraying

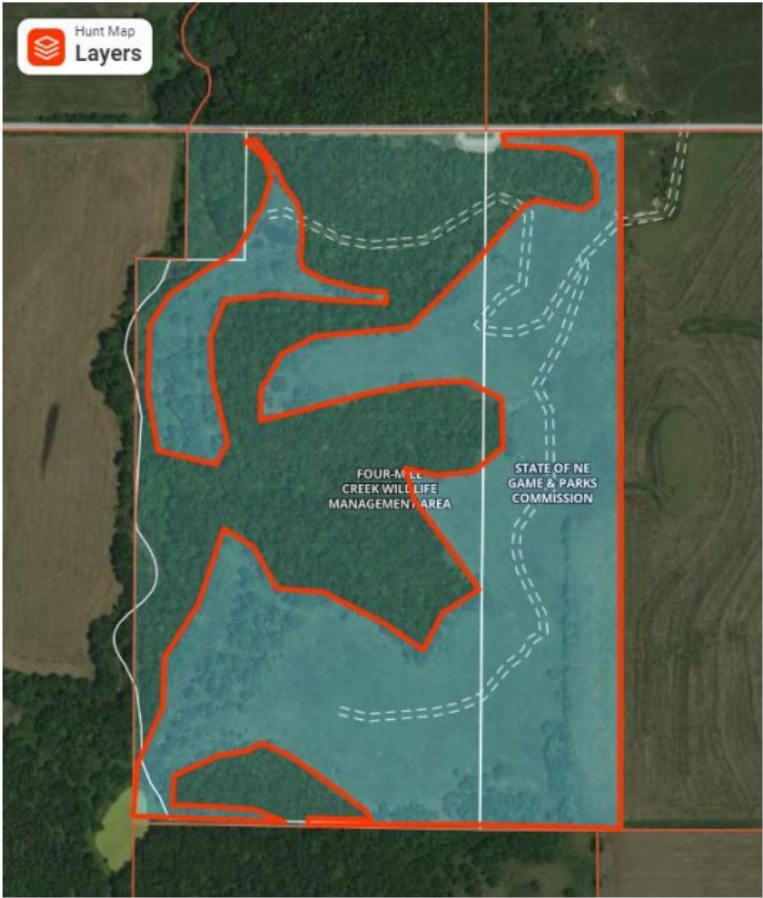
Killdeer WMA Map:



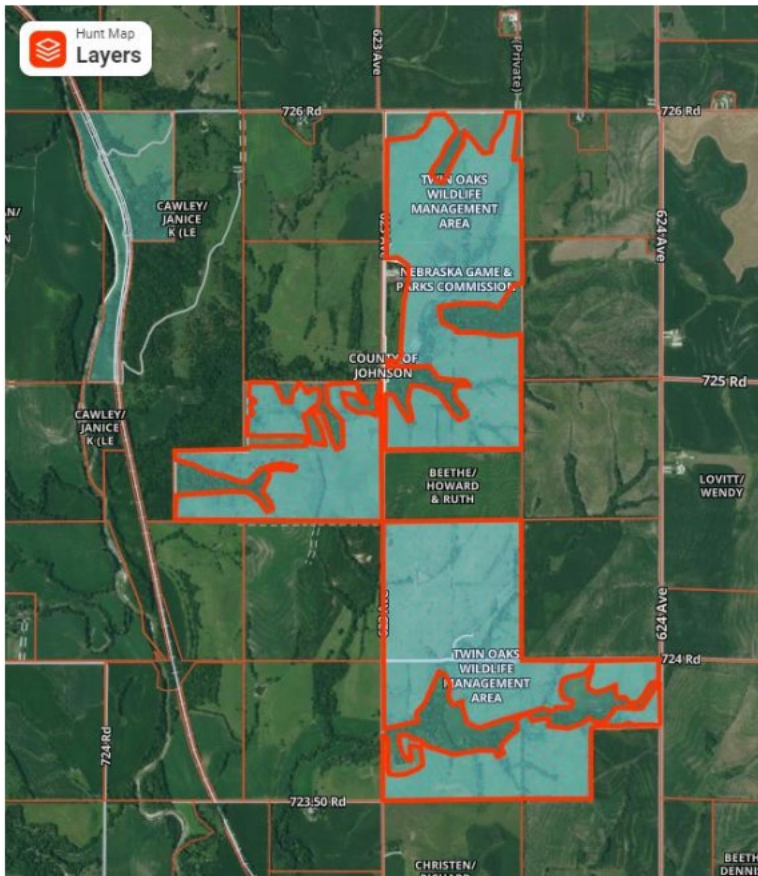
Bluestem WMA Map:



Four Mile Creek WMA Map:



James N. Douglas WMA Map:



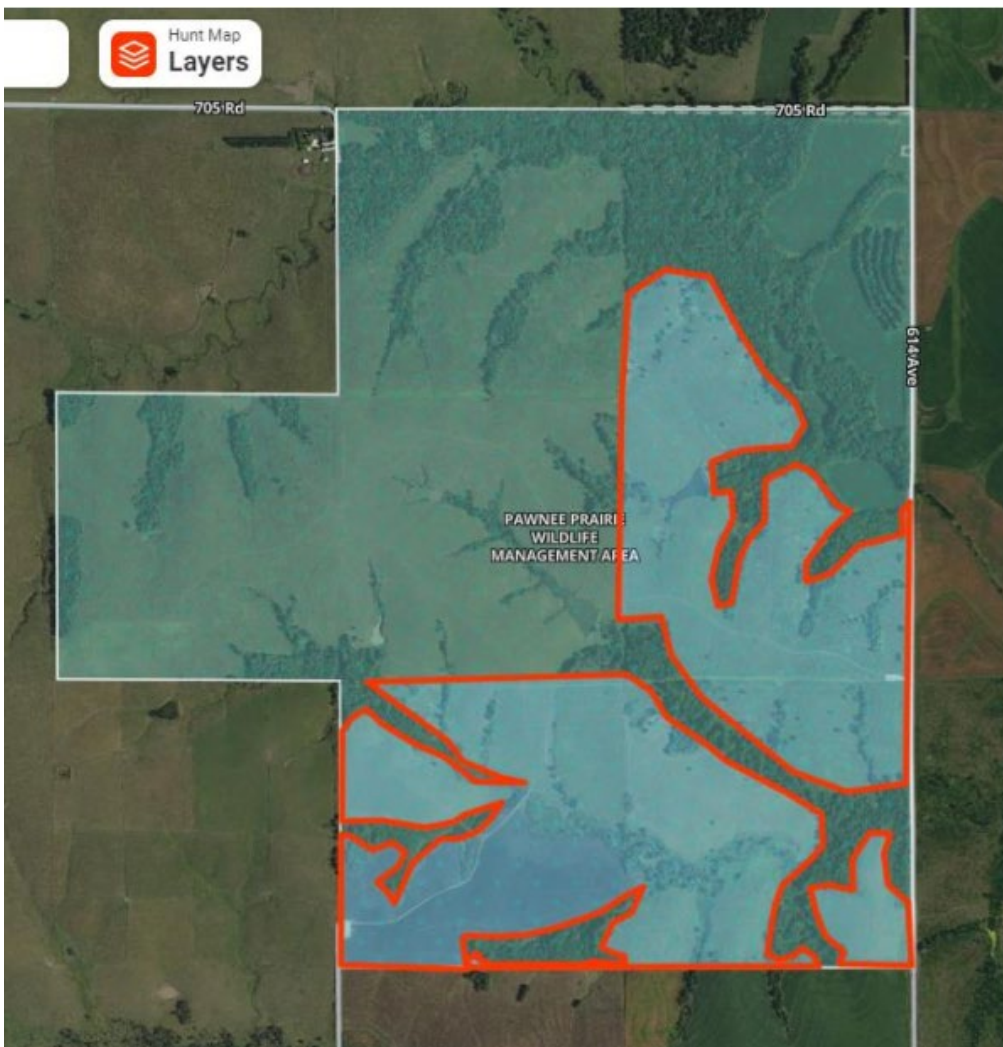
Kinters Ford WMA Map:



Mayberry WMA Map:



Pawnee Prairie WMA Map:



Prairie Knoll WMA Map:

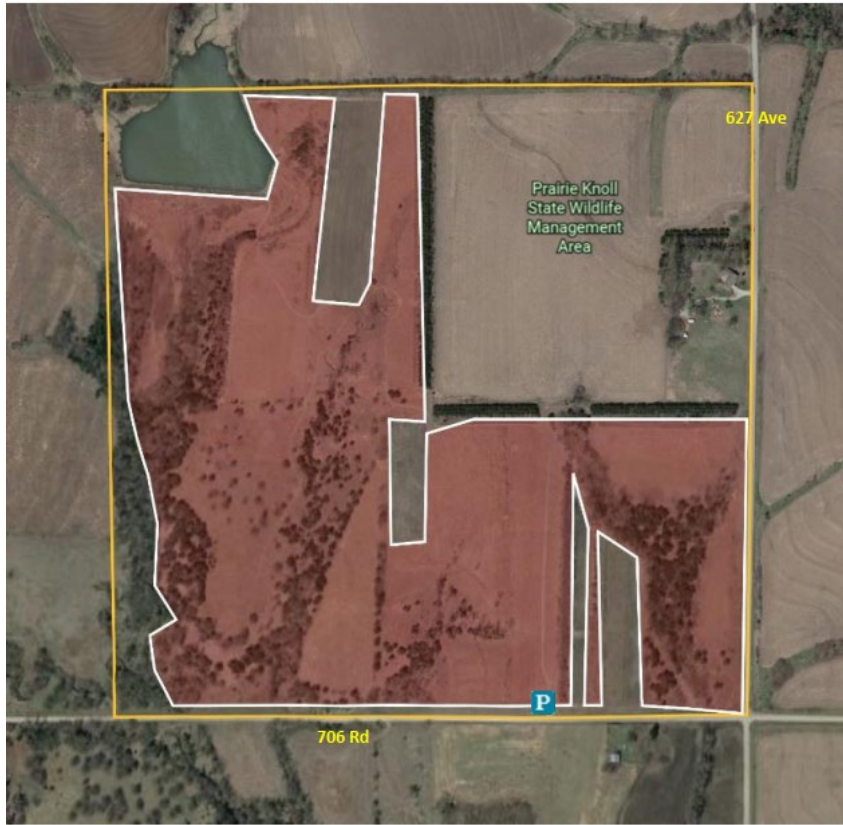


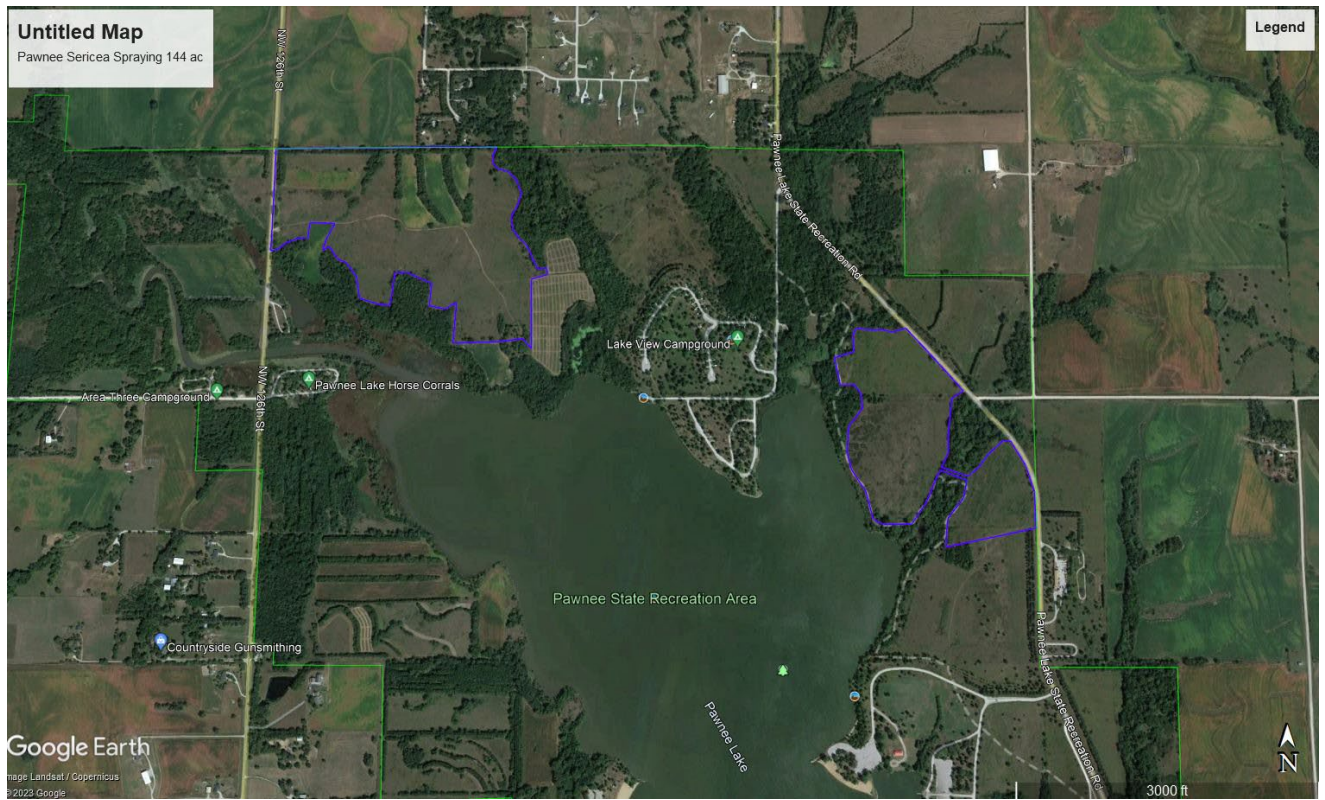
Table Rock WMA Map:



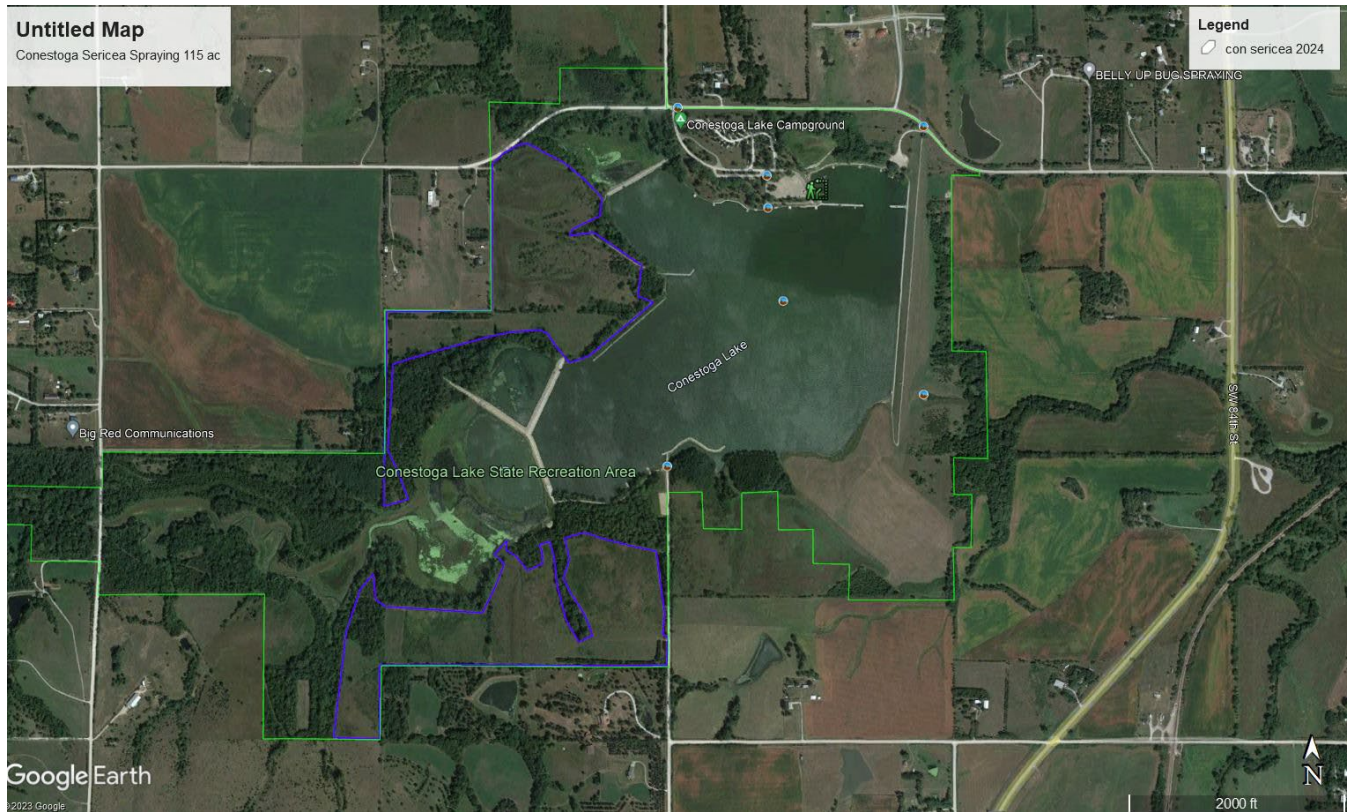
Location: 1 mile E of Table Rock, NE



Pawnee WMA Map:



Conestoga WMA Map:



Wagon train WMA Map:



Item 9 – Custom Spraying - Phragmites

Pawnee Slough WMA Map:



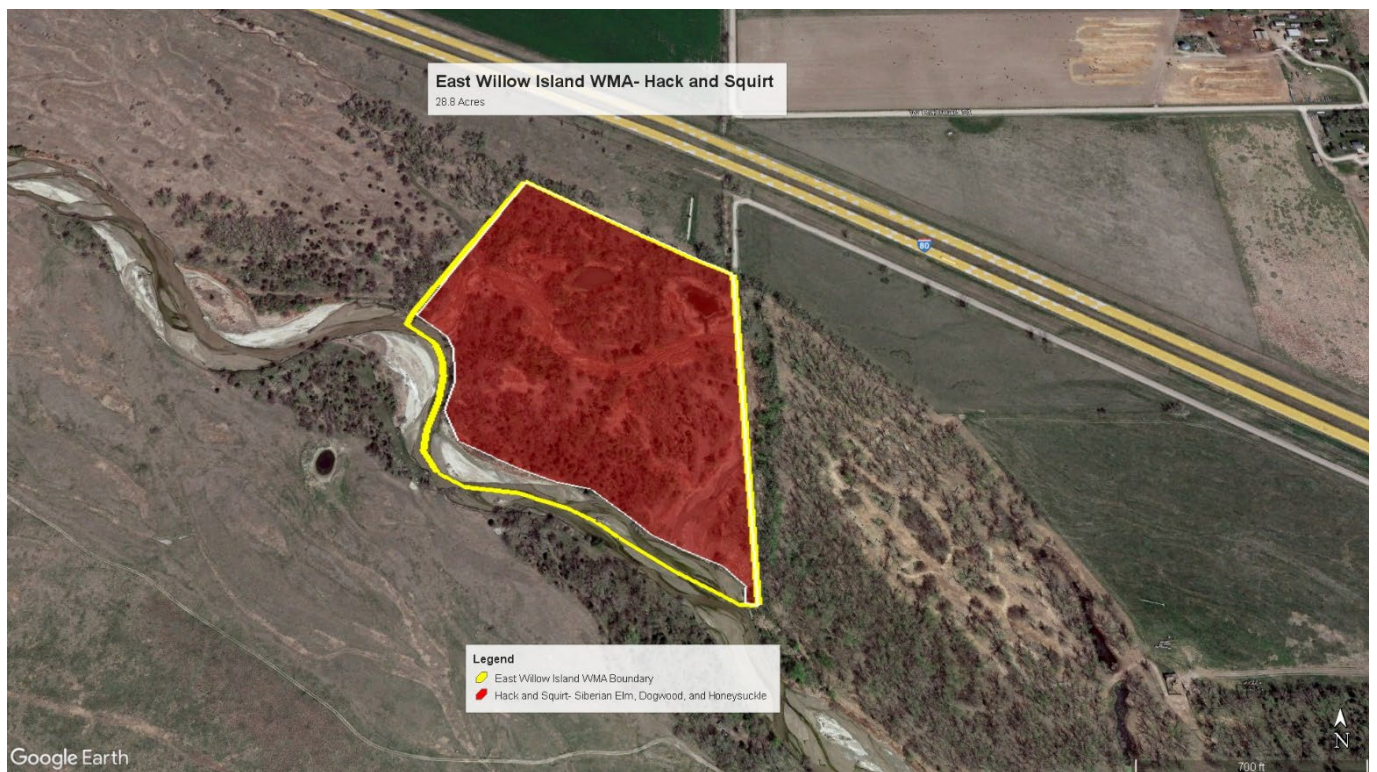
Item 10 – Custom Spraying - Thistle & Russian Olive

Projects are located along 14 small WMA's located along I-80 between Sutherland and Cozad. Exact locations of these WMAs can be found at <https://outdoornebraska.gov/guides-maps/public-access-atlas/>.

1. West Cozad WMA- 29 acres
2. East Willow Island WMA- 37 acres
3. Willow Island WMA- 46 acres
4. East Gothenburg WMA- 24 acres
5. West Gothenburg WMA (This WMA is in 2 halves. One half is on the north side of I-80 (lake), and the other half is south of I-80 (river bottom).)- 40 acres
6. Brady WMA- 14 acres
7. West Brady WMA- 8.3 acres
8. Pawnee Slough WMA- 40 acres
9. West Maxwell WMA- 6 acres
10. Fremont Slough WMA- 12 acres
11. Birdwood WMA- 13 acres
12. East Hershey WMA- 20 acres
13. Hershey WMA- 34 acres
14. East Sutherland WMA- 8 acres

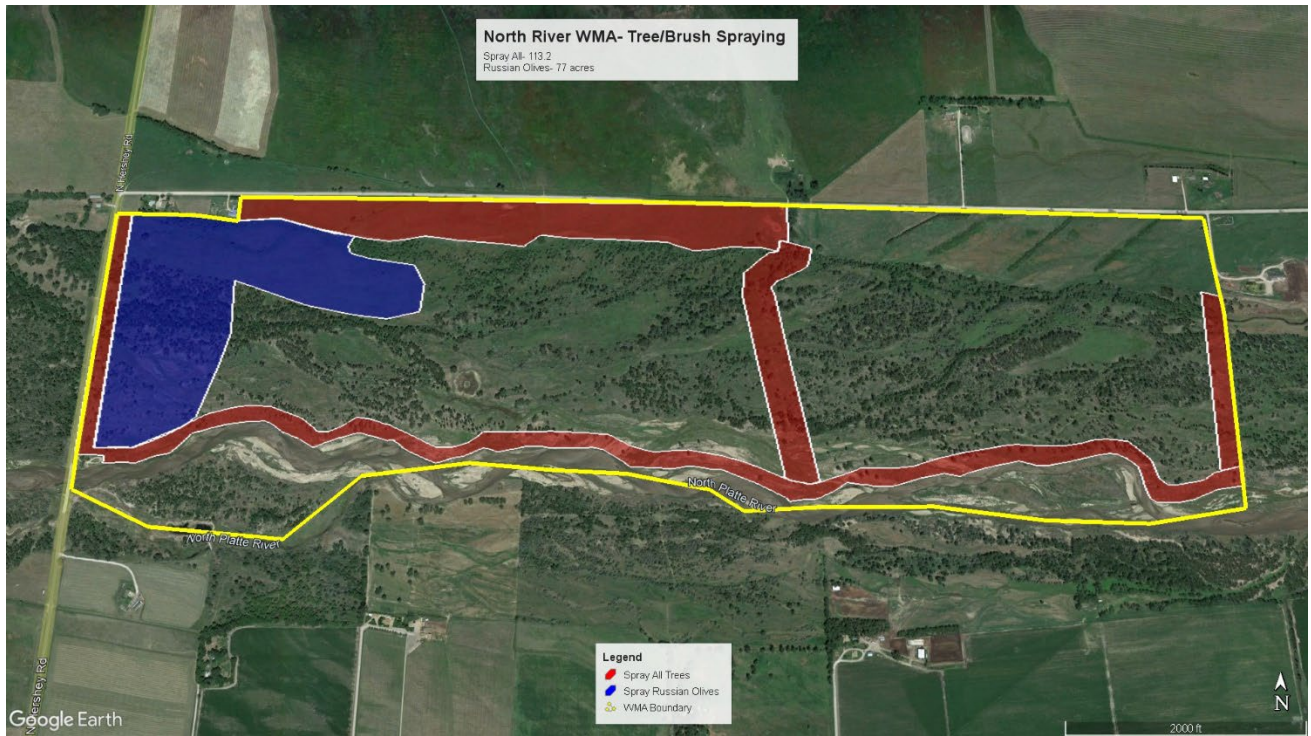
Item 11 – Hack and Squirt

East Willow WMA Map:



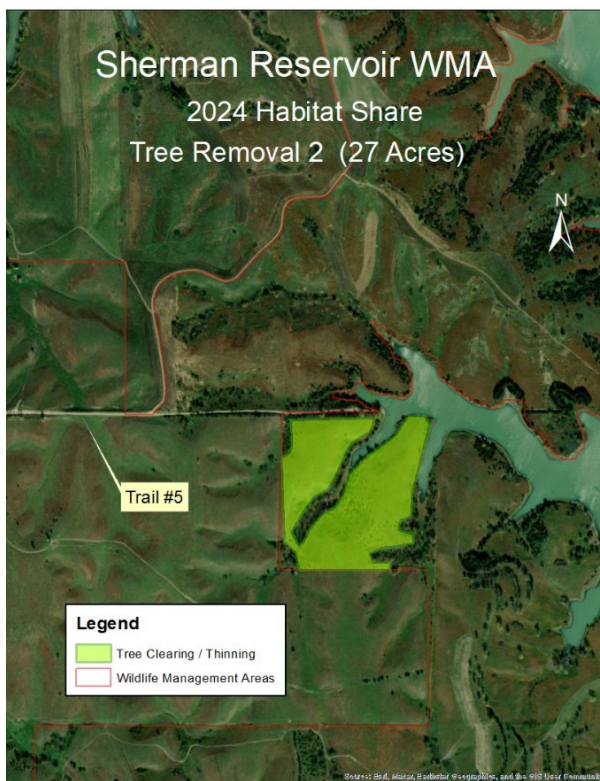
Item 12 – Tree/Brush Spraying

North River WMA Map:

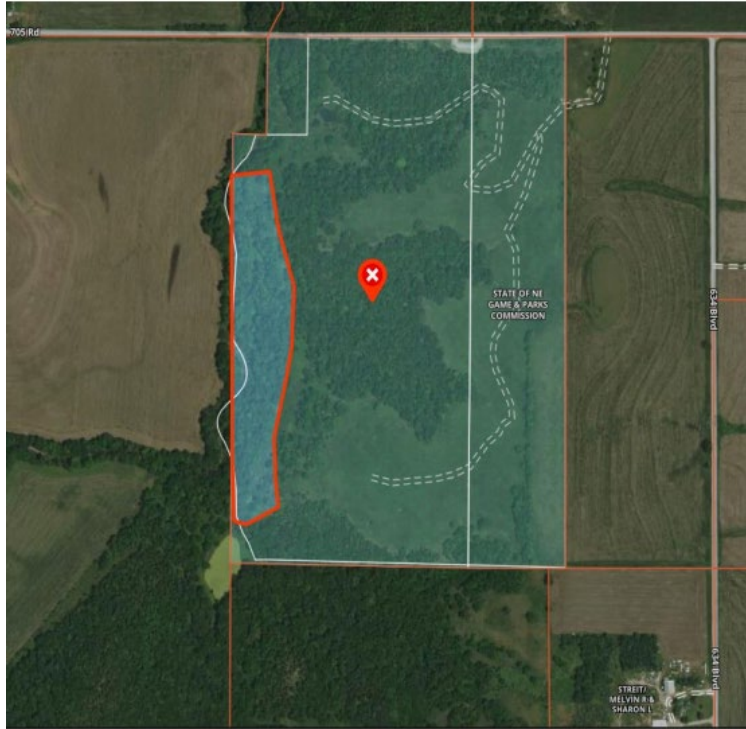


Item 13 – Tree Removal 2

Sherman Reservoir Map:



Four Mile Creek WMA Map: 6 miles East of Dubois.



Item 14 – Tree Removal 4

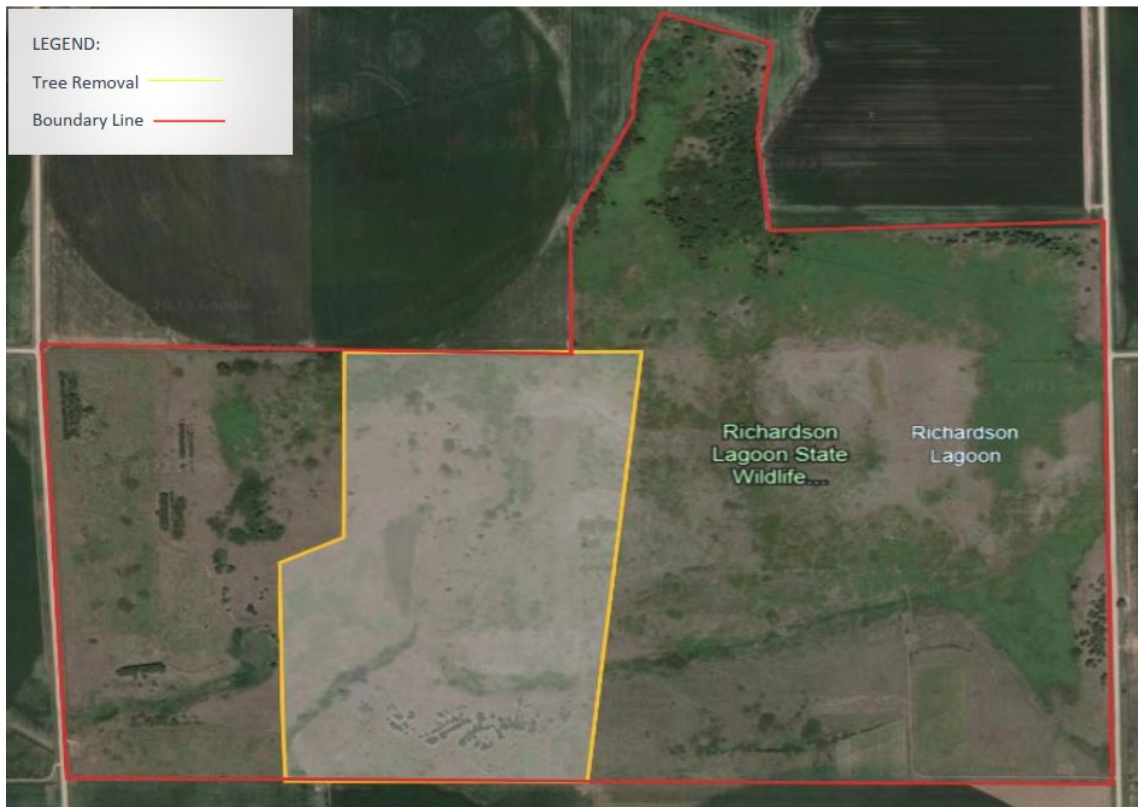
Olive Creek WMA Map:



Sacramento-Wilcox WMA Map:



West Sacramento WMA Map:



South Sacramento WMA Map:



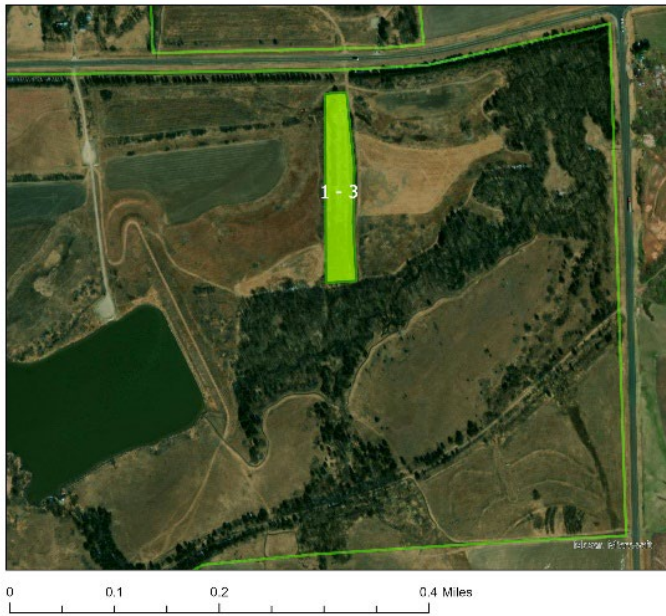
Dry Sandy WMA Map:

Dry Sandy WMA
HS Tree Clearing 2024



Diamond Lake WMA Map:

Diamond Lake WMA
HS Tree Piling Clearing 2024



Arrowhead WMA Map:

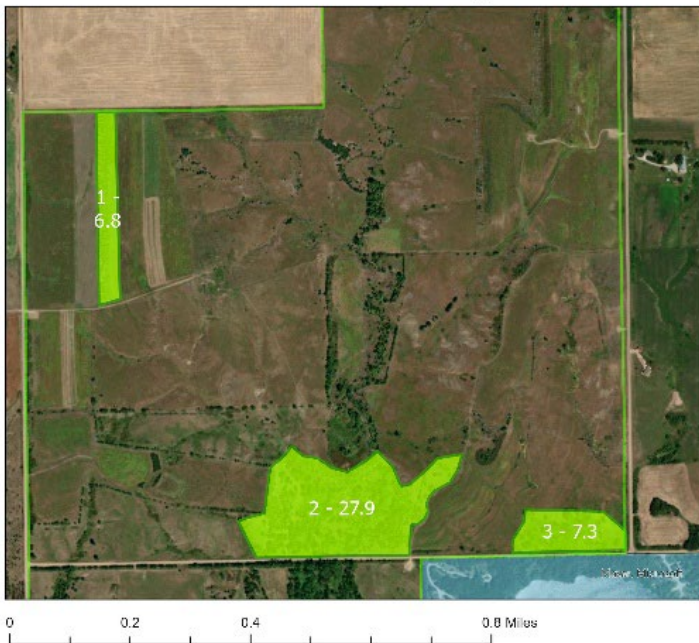
Meridian WMA Map:

Meridian WMA HS Tree Clearing 2024



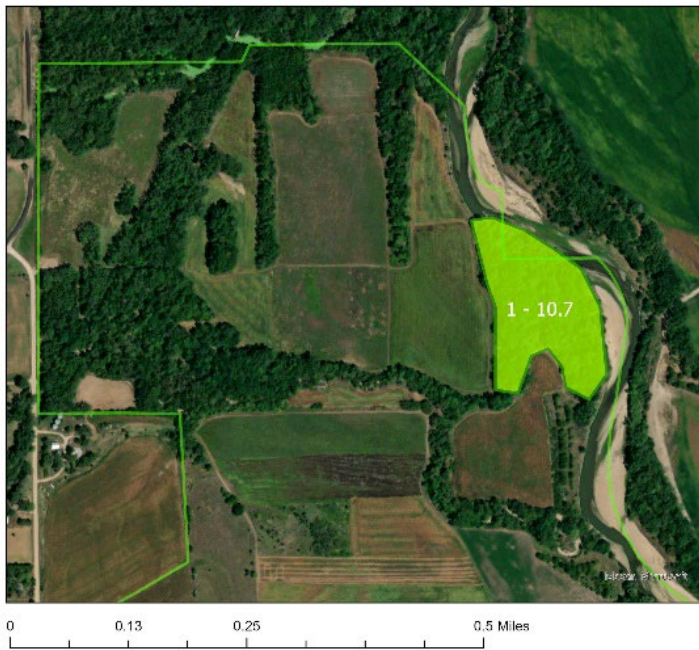
Alexandria WMA Map:

Alexandria WMA HS Tree/Brush Clearing 2024



Flathead WMA Map:

Flathead WMA HS Tree Clearing 2024



Item 15 – Brush Clearing/Tree Removal

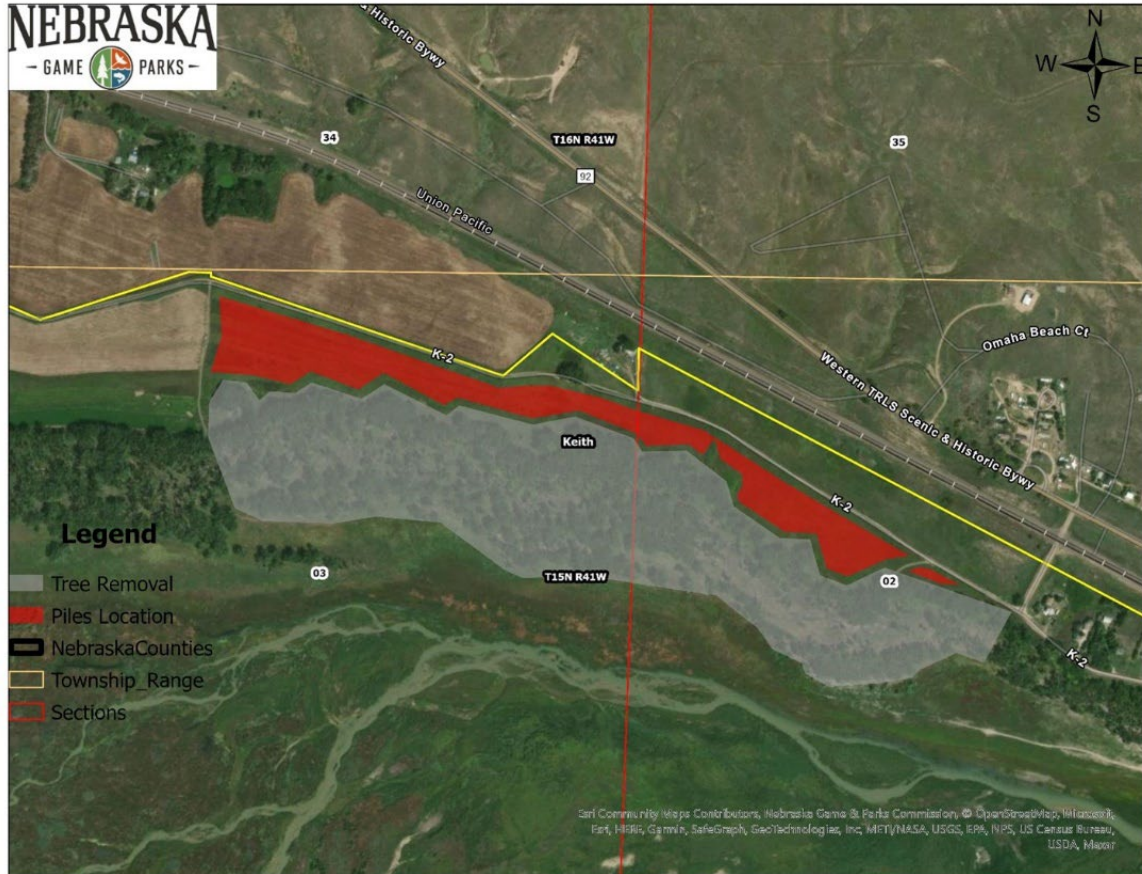
Harold A. Anderson WMA Map:



Swan Creek WMA Map:

Item 16 – Tree Removal & Woody Debris Cleanup

Clear Creek WMA Map:



Item 17 – Custom Tree/Brush Removal

Branched Oak WMA Map:

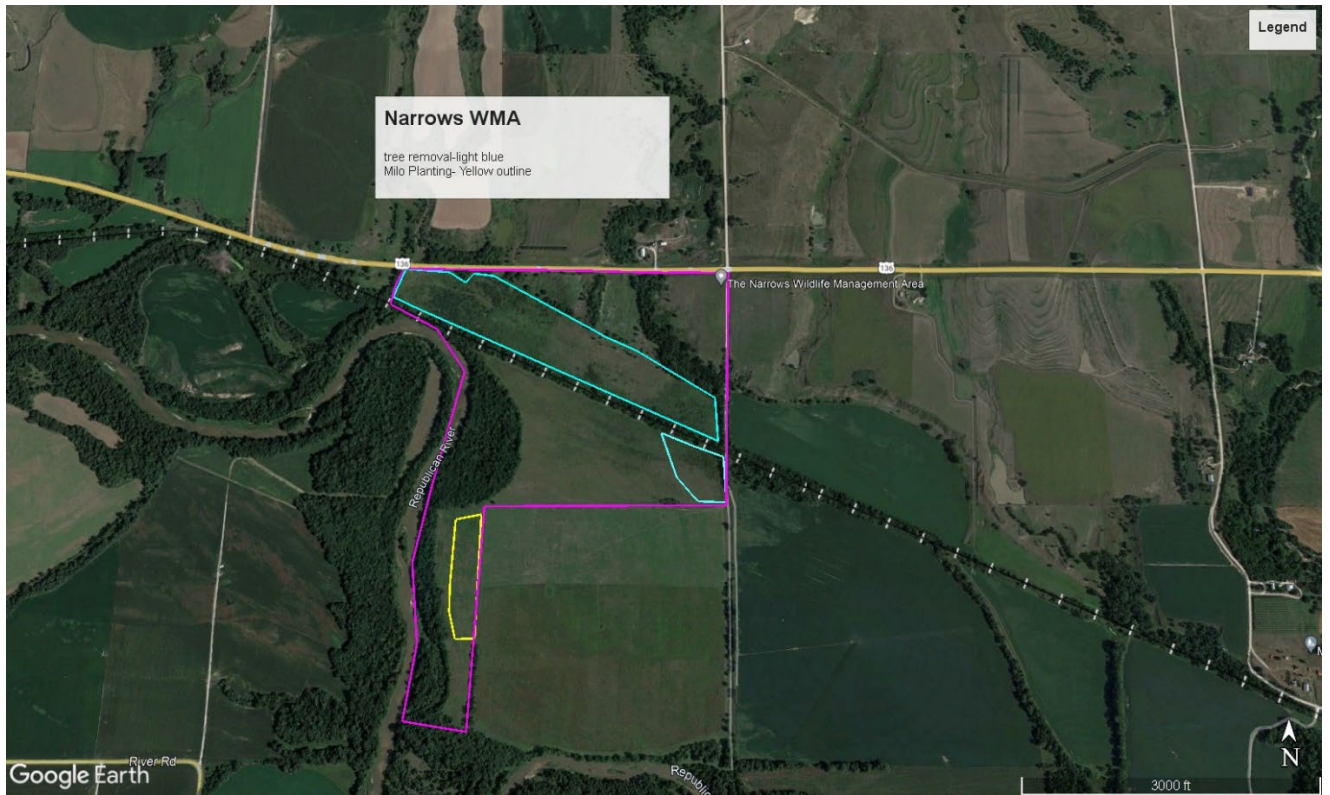


Yankee Hill WMA Map:



Item 18 – Custom Tree Removal

Narrows WMA Map:

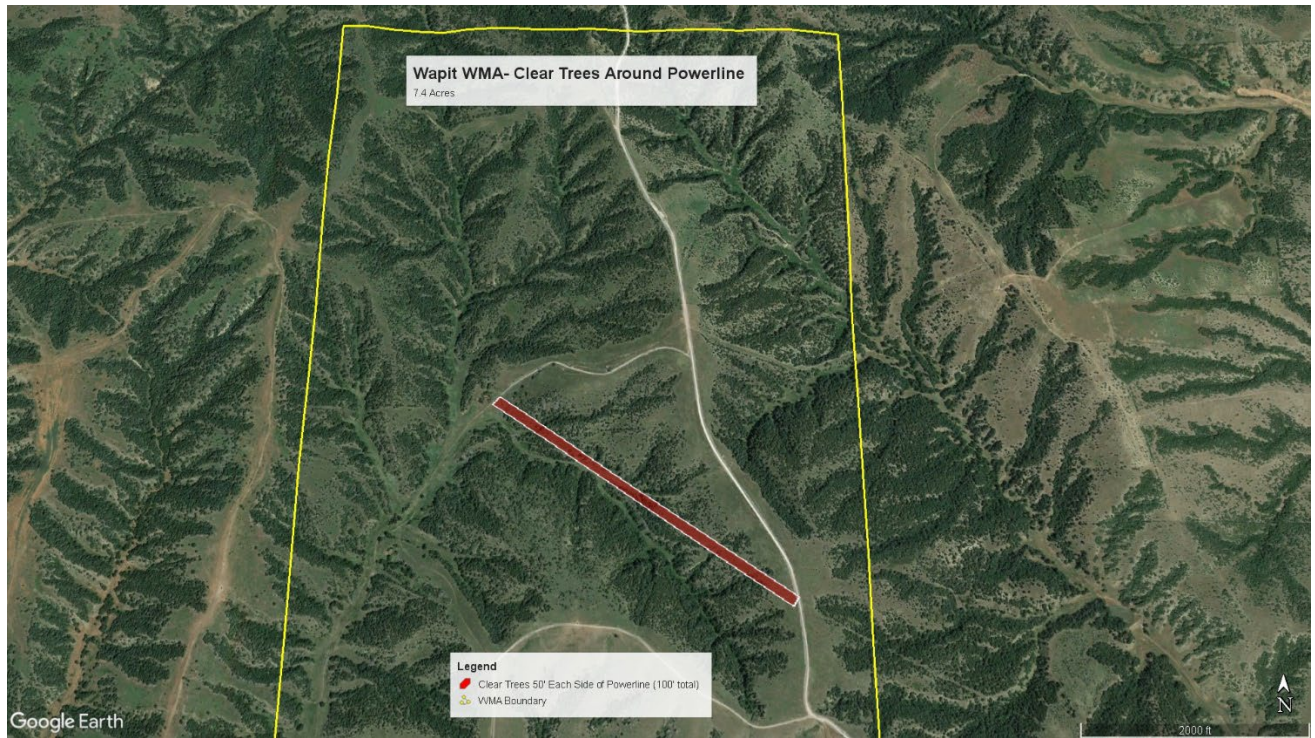


Indian Creek WMA Map:



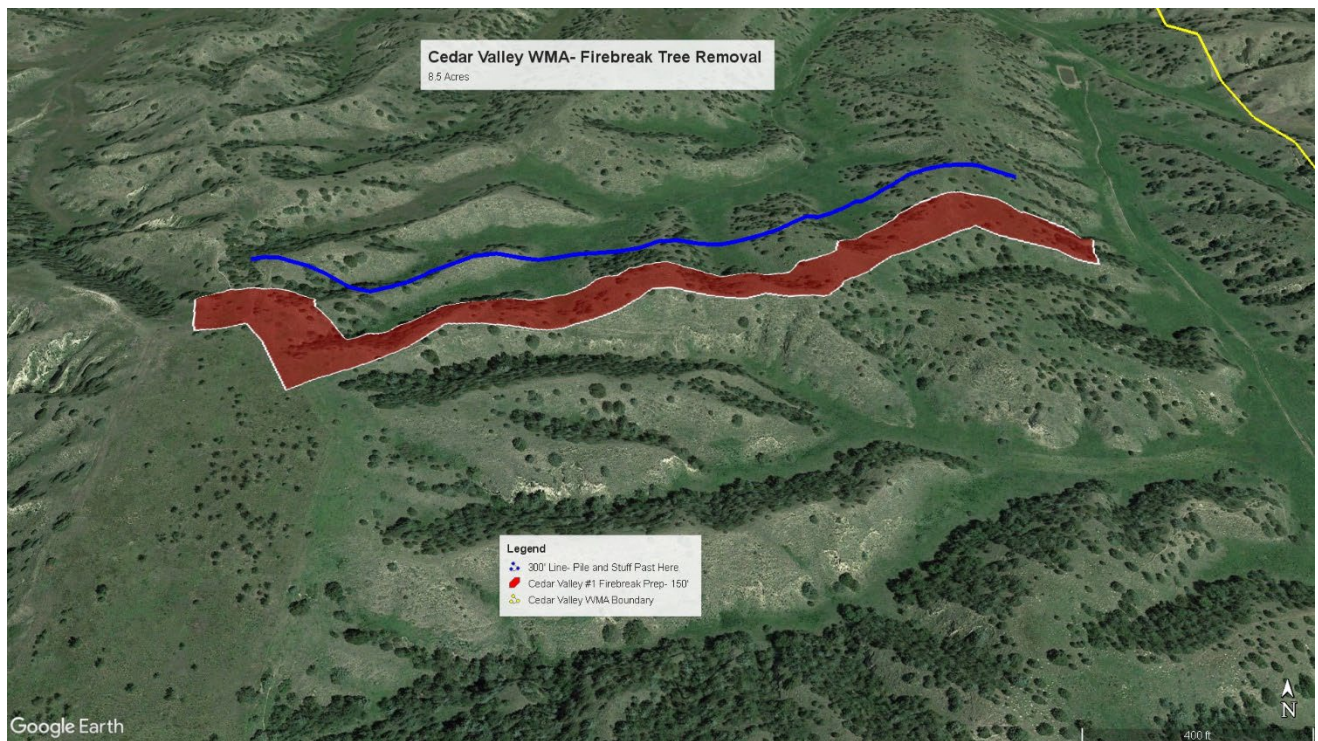
Item 19 – Custom Tree Removal

Wapiti WMA Map:

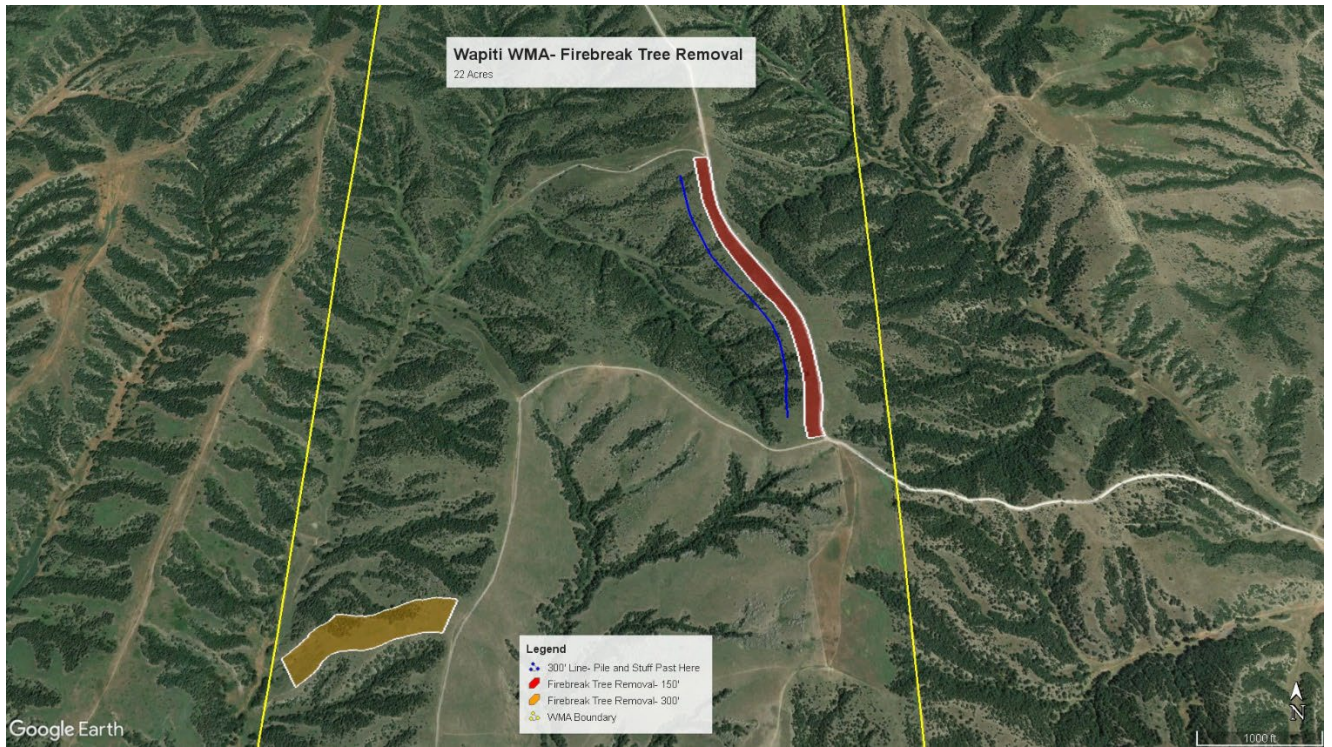


Item 20 – Firebreak Tree Removal 1

Cedar Valley WMA Map:

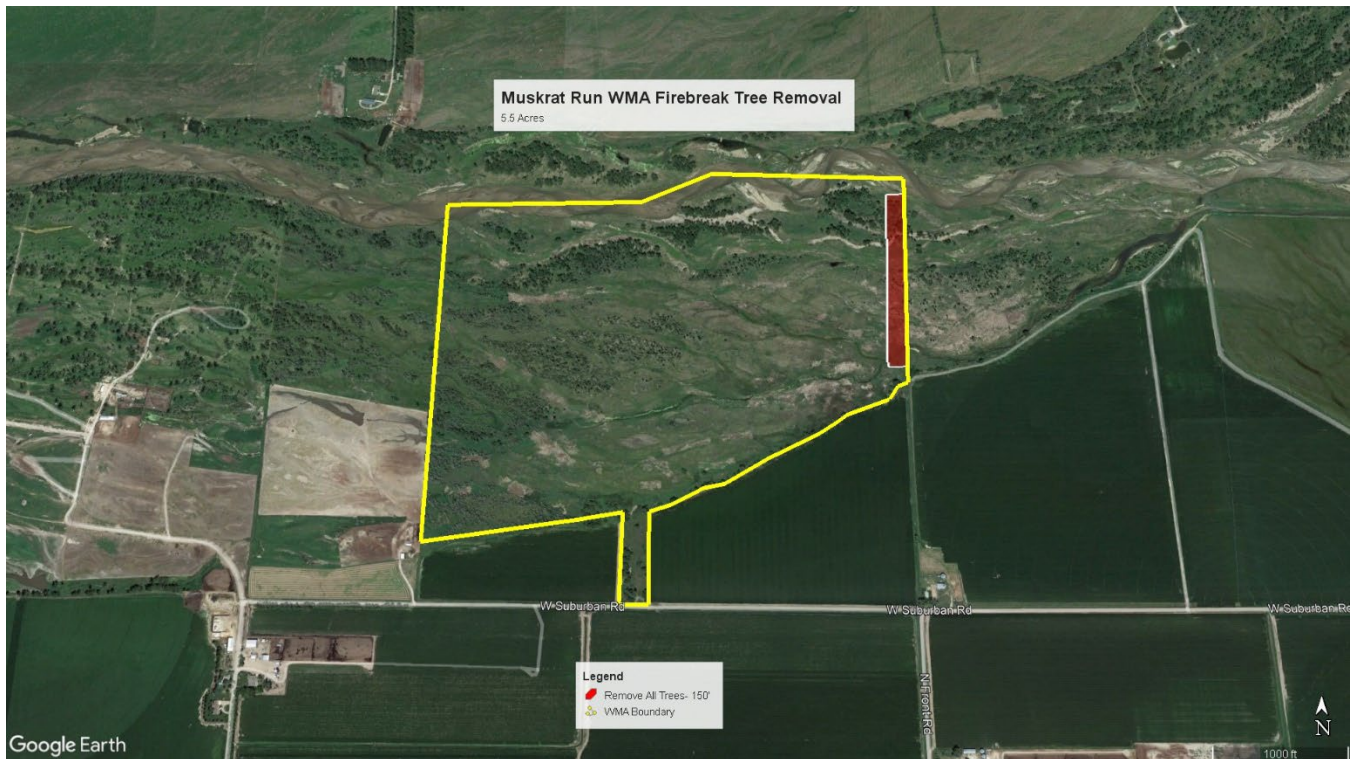


Wapiti WMA Map:

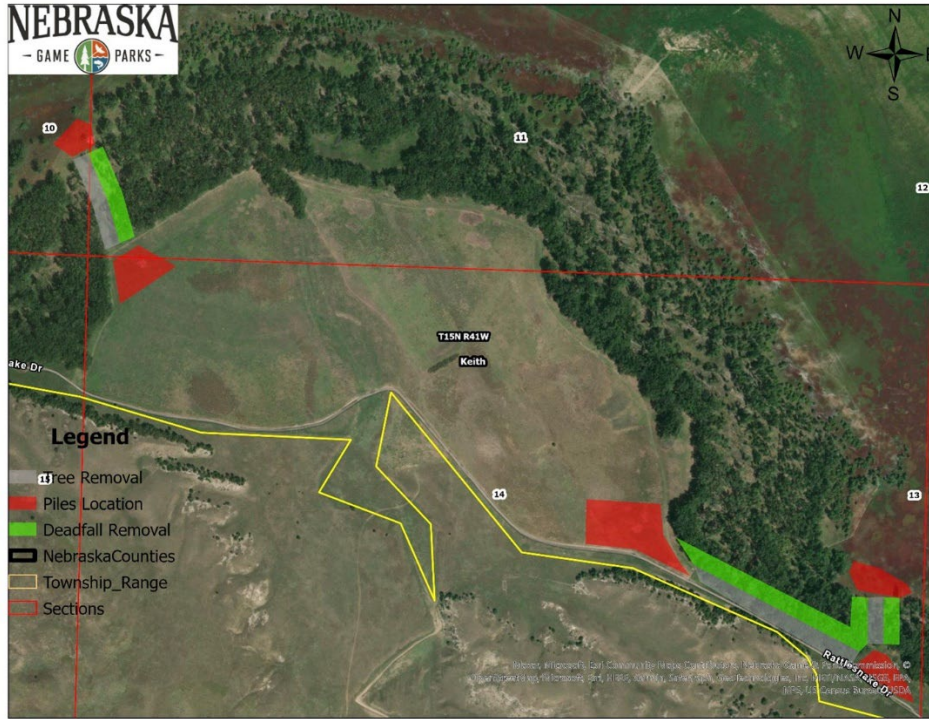


Item 21 – Firebreak Tree Removal 2

Muskrat Run WMA Map:



Clear Creek WMA Map:



Item 22 – Disk and Interseeding

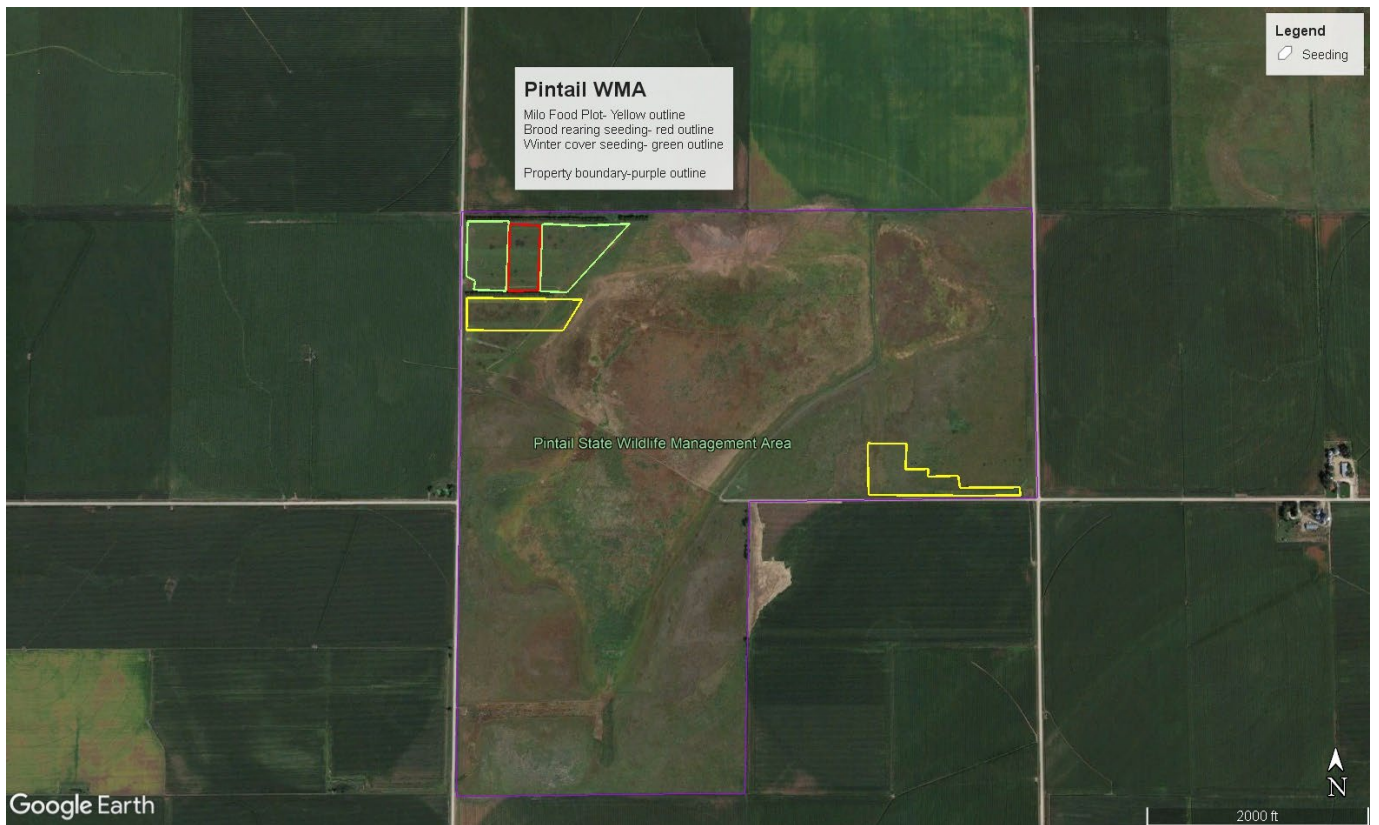
Sherman Reservoir Map:



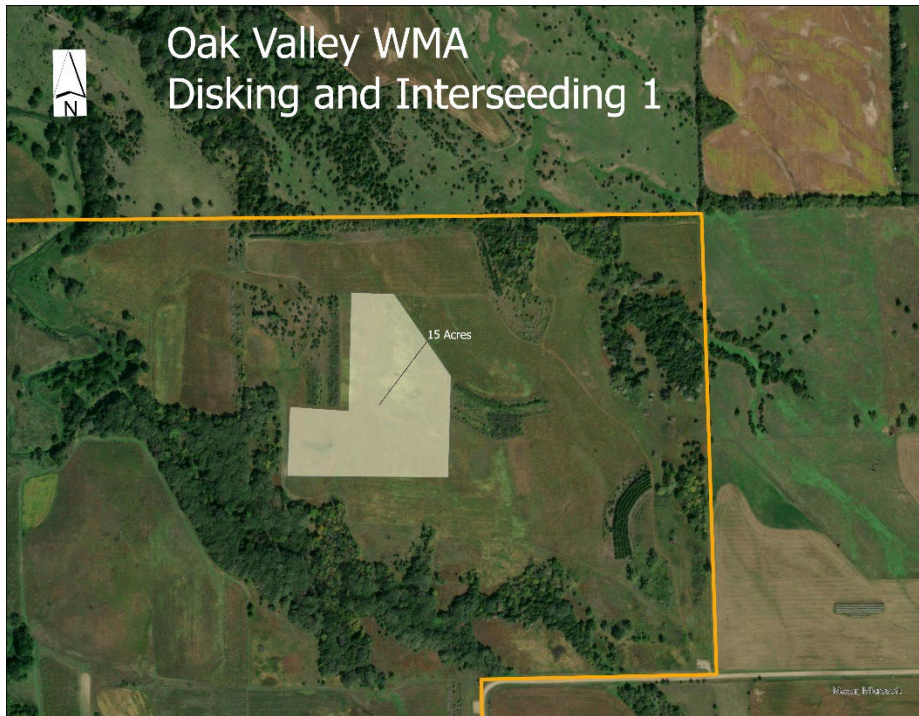
Pressey WMA Map:



Pintail WMA Map:



Oak Valley WMA Map:



Item 23 – Interseeding 1

Branched Oak WMA Map:



Larkspur WMA Map:



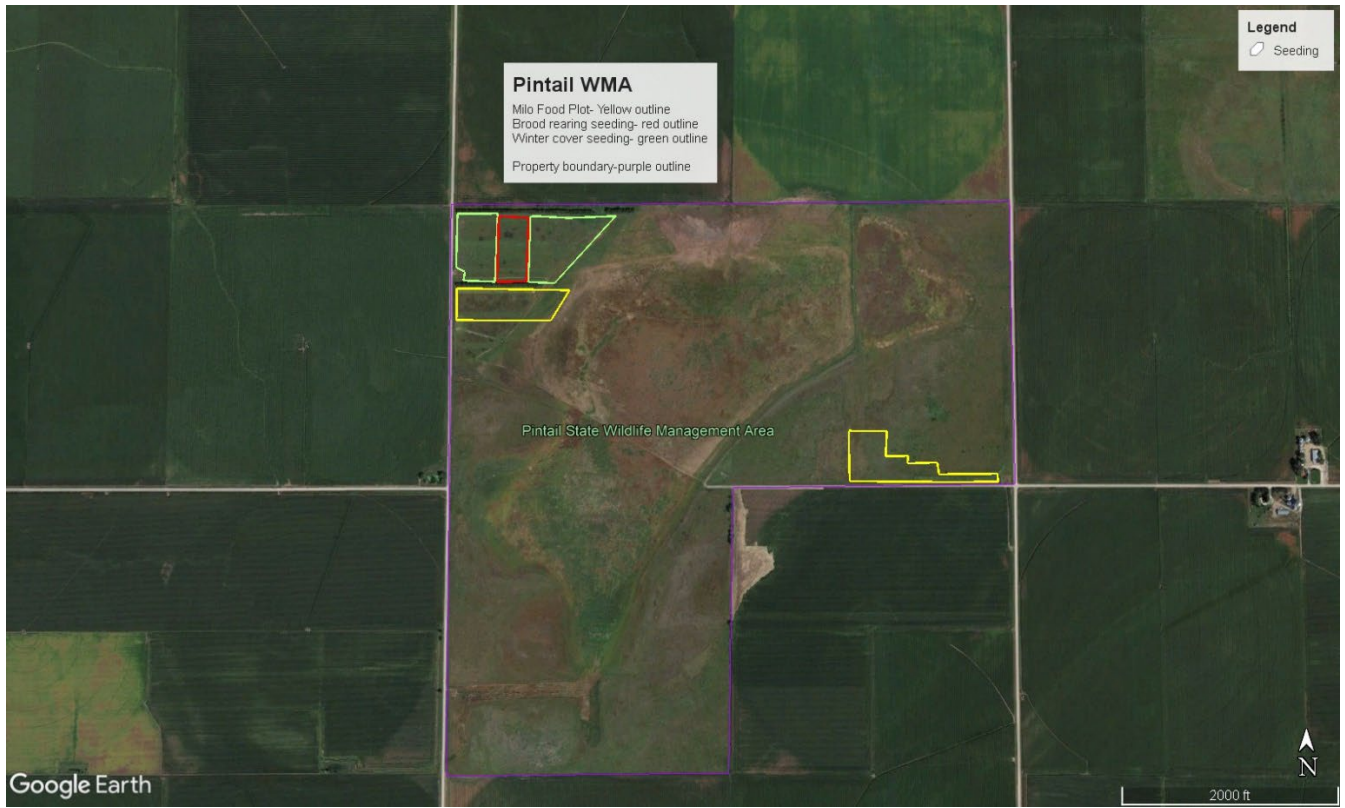
Item 24 – Interseeding 2

Thompson Barnes WMA Map:

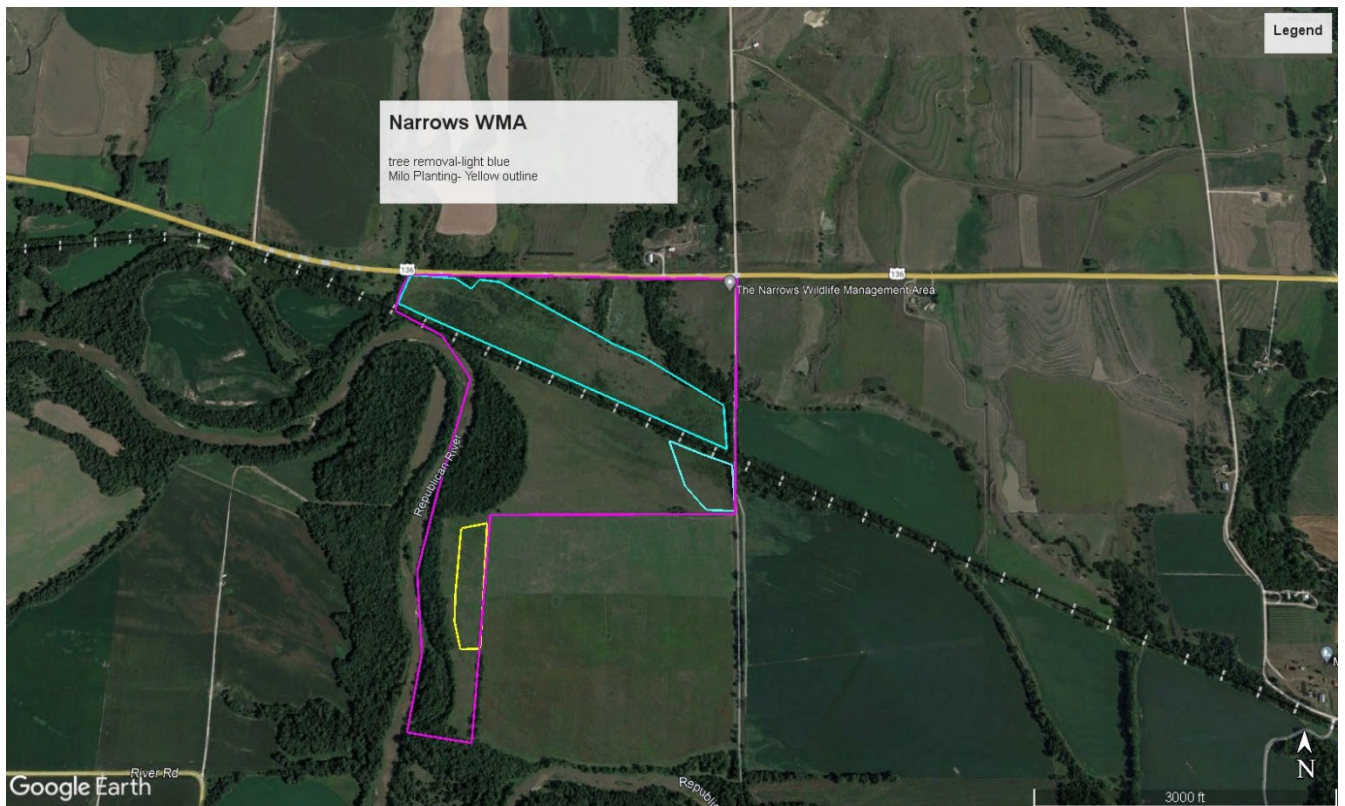


Item 25 – Milo Food Plot 1

Pintail WMA Map:



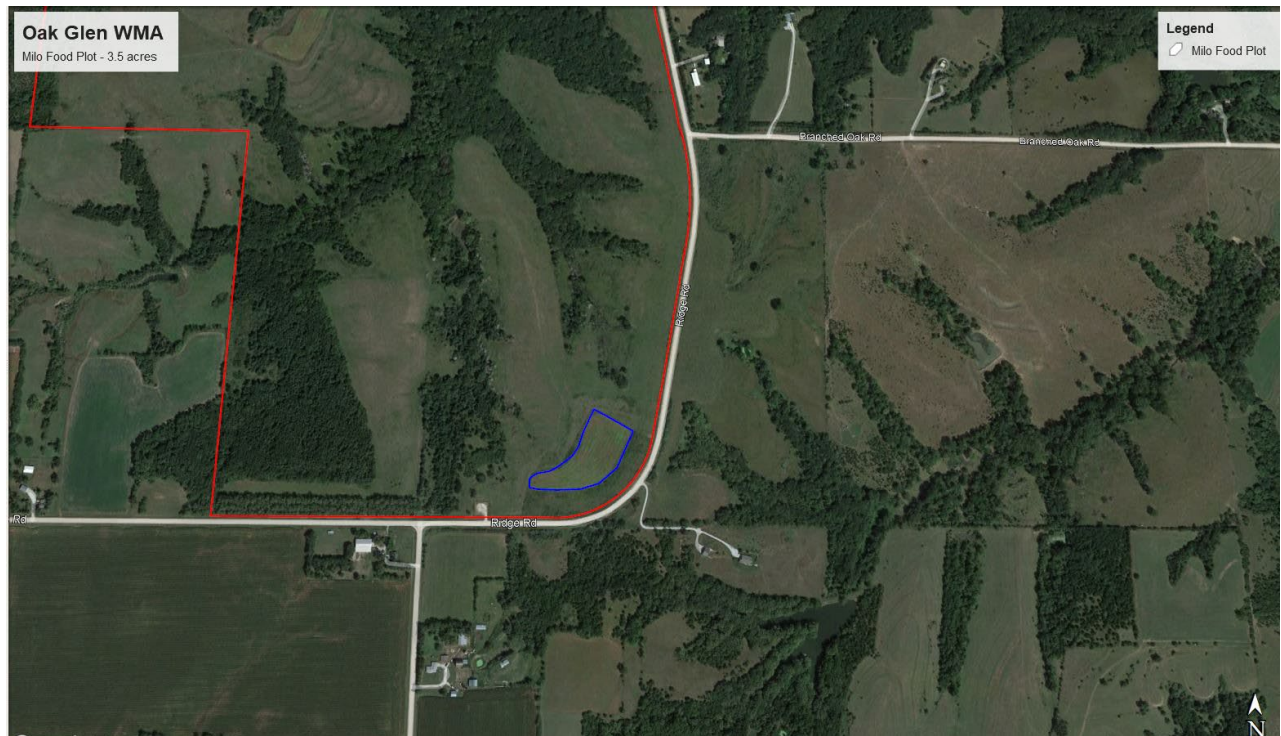
Narrows WMA Map:



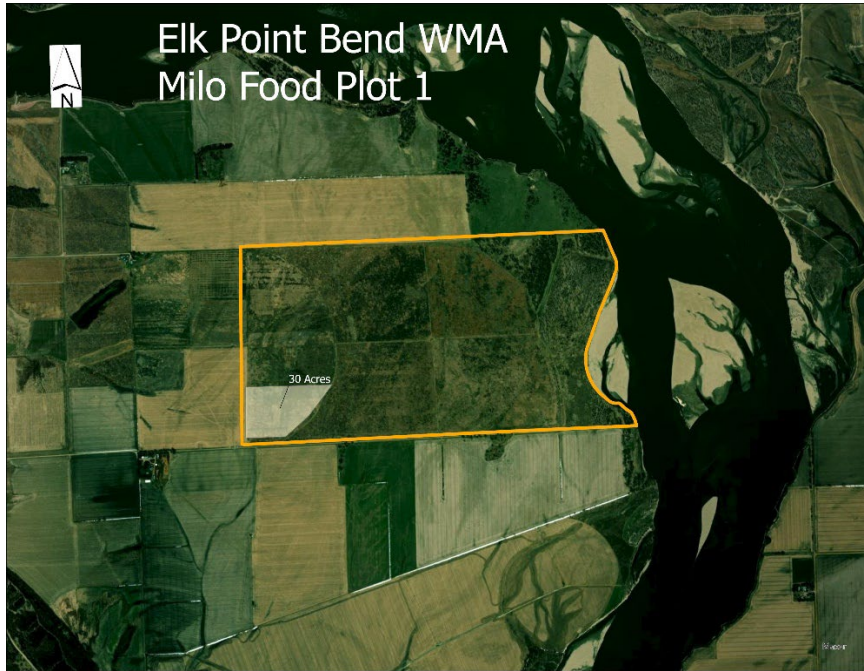
Stagecoach WMA Map:



Oak Glen WMA Map:



Elk Point Bend WMA Map:



Thompson Barnes WMA Map:

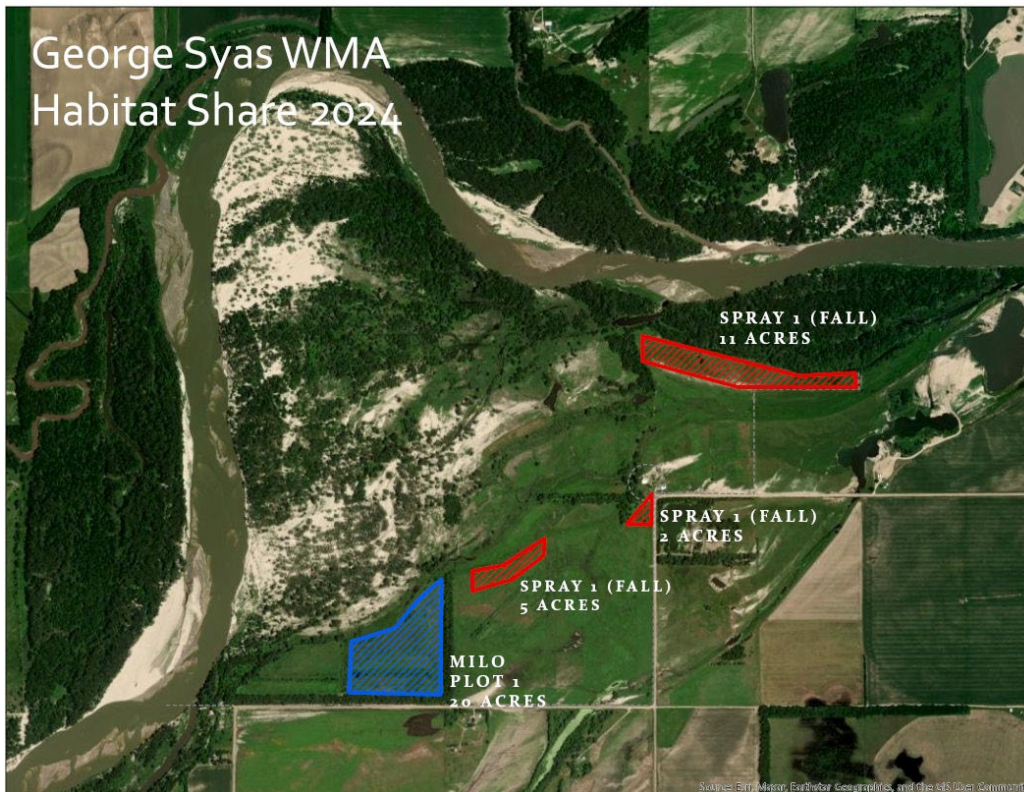


- Habitat Management Activities
- | Management Activity Type | Color |
|--|----------------|
| Monitoring | Light Green |
| Planting (Food Plots / Crops / Grasslands) | Yellow |
| Spraying | Blue |
| Tilling | Pink |
| Tree Clearing / Thinning | Orange |
| <all other values> | Grey |
| Wildlife Management Areas | Orange Outline |
| Prescribed Burning | Brown |
| Disking | Red |
| Prescribed Grazing | Yellow-Green |
| Prescribed Haying | Purple |

Wilkinson WMA Map:



George Syas WMA Map:



Don Dworak WMA Map:

